

For Public Notice via Internet

REASONS FOR DECISION UNDER *ENVIRONMENT EFFECTS ACT 1978*

Title of Proposal: Newfield Wind Farm

Proponent: Acciona Energy Oceania

Description of Project:

Up to 15 turbines of about 1.5 MW installed capacity would be installed along a 4km ridgeline at Newfield, approximately 7.5 km north of Port Campbell. The total installed capacity of the wind farm would be about 22.5MW. The wind farm would include wind turbine generators, underground cabling, an electrical substation (transformers, switchyard and control building), access tracks, crane pads and anemometer.

The attached map and aerial photograph shows the location of the works.

Decision:

The Minister for Planning has determined that an **Environment Effects Statement is not required** for this proposed wind farm.

Reasons for Decision:

- The project site mostly consists of cleared agricultural land, with considerable scope to adjust the siting of turbines and associated infrastructure for this wind energy facility to avoid significant adverse effects on indigenous flora and fauna and to mitigate other environmental effects.
- Potential effects on landscape values and residential amenity are likely to be of no more than local significance.
- The planning permit process, informed by the *Policy and planning guidelines for development of wind energy facilities in Victoria*, offers a suitable mechanism to assess potential environmental effects and related issues.

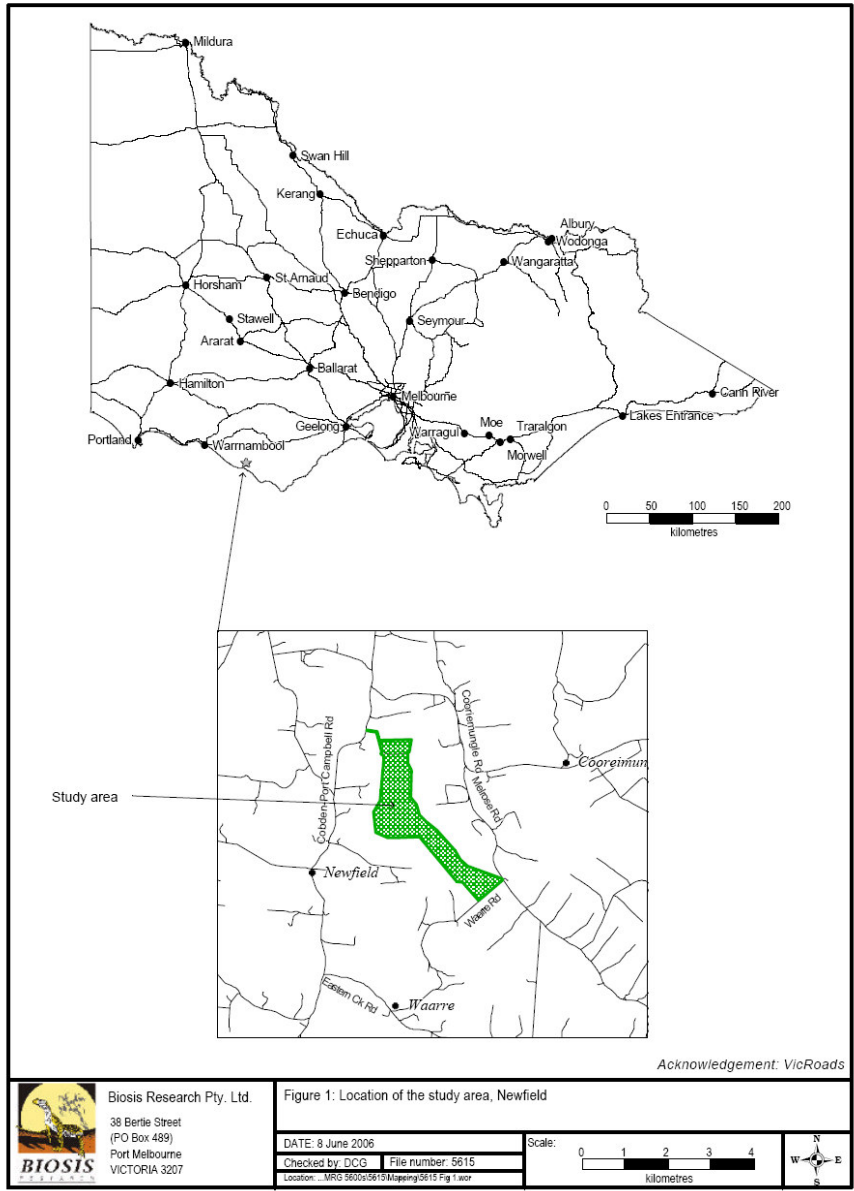


Figure 1: Site location (Source: Acciona Energy Oceania Pty Ltd).

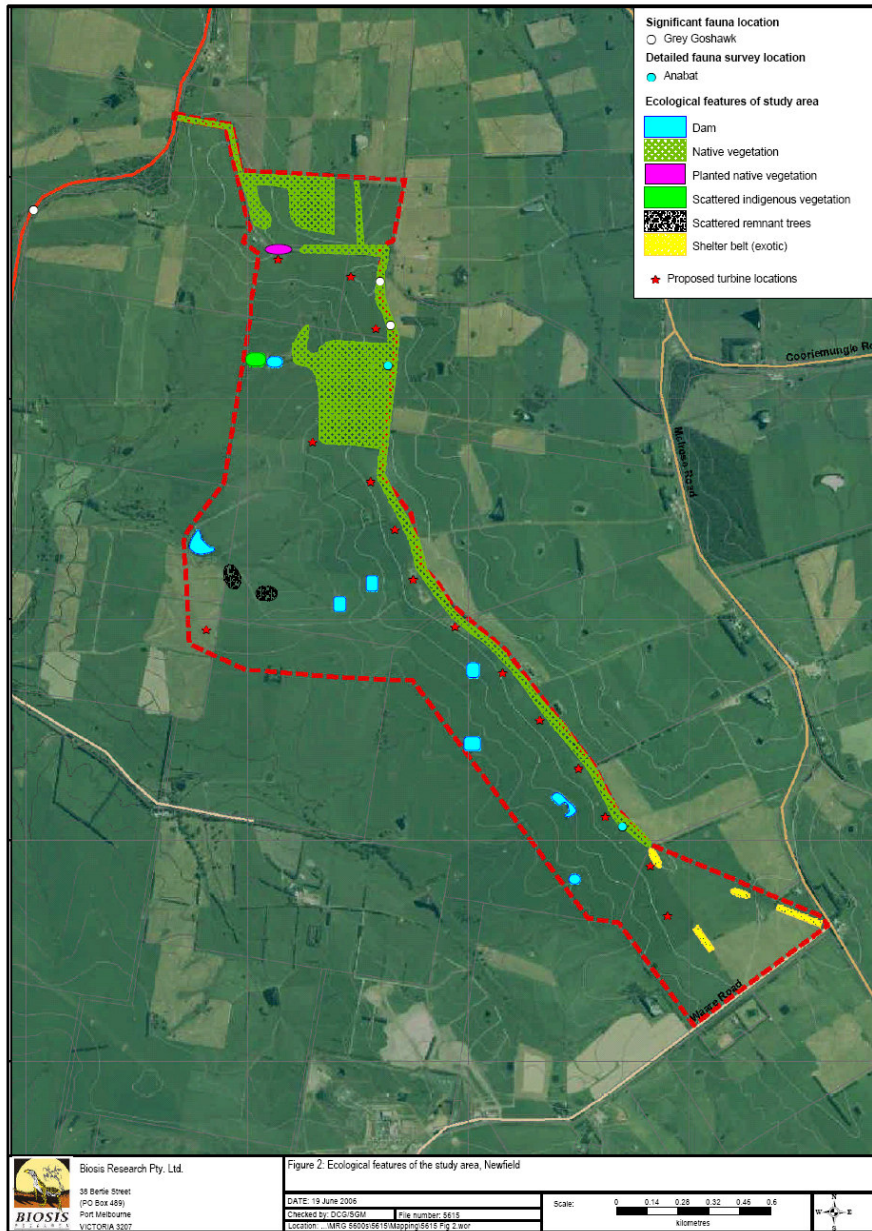


Figure 2: Aerial photograph, site and environs features (Source: Acciona Energy Oceania Pty Ltd).