



Character Type 6

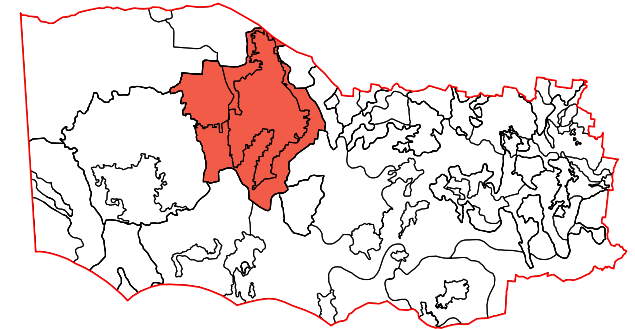
Grampians (Gariwerd) & Surrounds

6 GRAMPIANS (GARIWERD) & SURROUNDS

The Grampians are a visually spectacular range of mountains that rise dramatically from the pastoral plains of Victoria, forming the southernmost part of the Great Dividing Range. Their jagged silhouette is a prominent feature on the distant horizon, visible from many parts of the study area. Up close the mountains have a commanding presence that dwarfs surrounding features. They are often shrouded in cloud and influence the weather patterns around them.

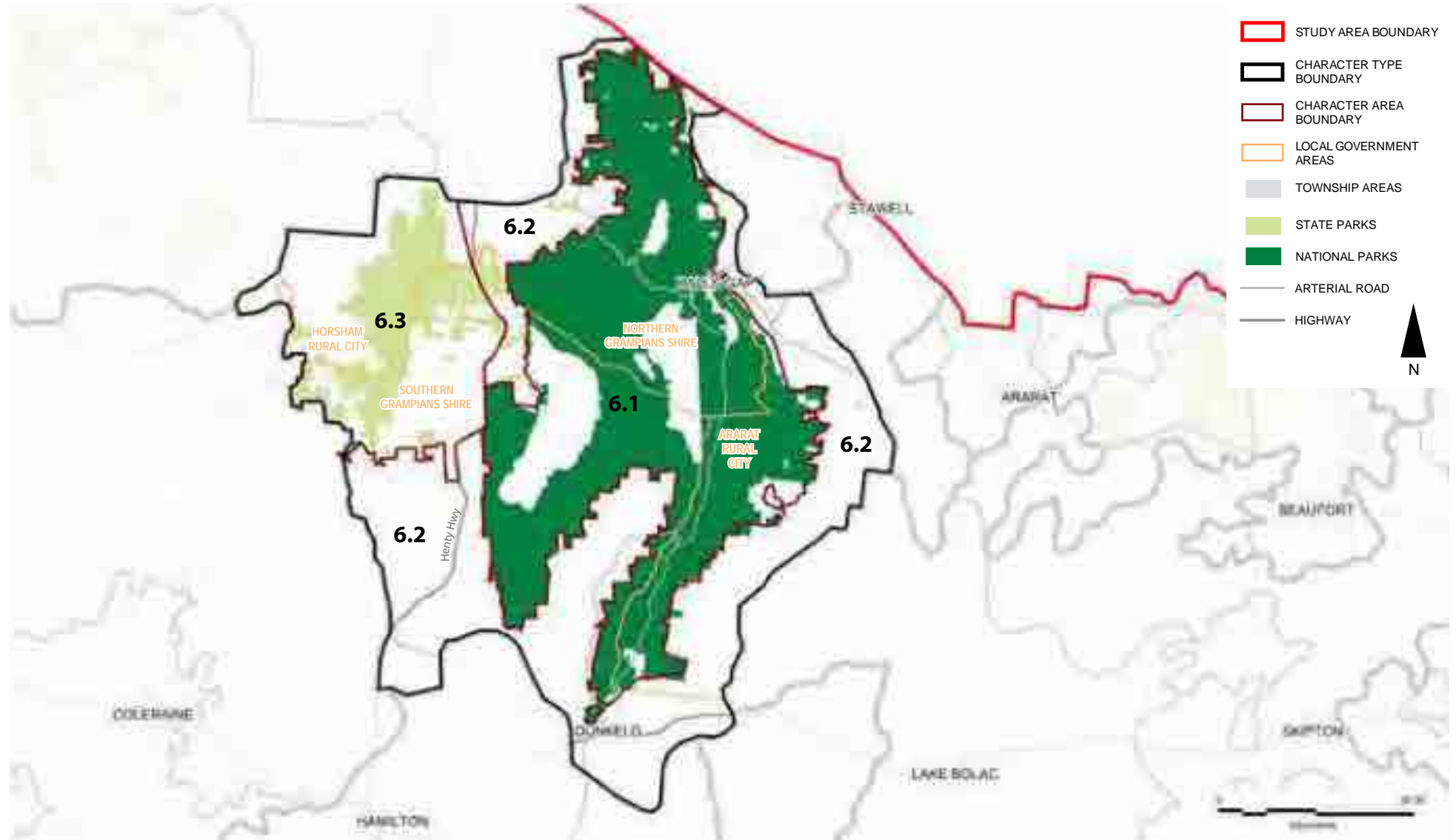
Three character areas have been identified within this Type:

- 6.1 The Grampians Ranges
- 6.2 Grampians Surrounds
- 6.3 Black Range & Surrounds



The Grampians rise dramatically from the surrounding pastoral land, as seen from One Tree Hill lookout west of Ararat.

Figure 1 Grampians (Gariwerd) & Surrounds Location



Key Features

- Jagged sandstone escarpments cloaked in vegetation that rise dramatically from the surrounding flat pastoral land
- Remnant Grassy Woodlands vegetation communities including isolated River Red Gums scattered throughout paddocks

Landscape Characteristics

Landform

The Grampians are an ancient landscape of jagged sandstone ridges that rise up out of the surrounding plains, stretching on a north-south axis over around 90km. The Mount Difficult Range forms the northern arm and is separated by the Mount William Range on the eastern side by Halls Gap. The Serra Range runs almost parallel inside the Mount William Range and is separated from the western ridges of the Victoria Range by the Victoria Valley. Mount William is the highest peak rising to 1167m above sea level. Mount Sturgeon and Mount Abrupt are highly distinctive landforms that form part of the Serra Range at the southern most point.

The land surrounding the ranges is characterised by flat to slightly undulating pastoral land, with low rounded foothills. Smaller, granitic hills and outcrops are found within these, particularly within the Victoria Valley. The Black Range is a lower landform located to the west of the Grampians.

Waterform

The Ranges contain a number of significant water features that have a strong influence over the hydrology of the surrounding region. A number of western Victoria's major rivers including the Glenelg, Wannon, Wimmera and Hopkins Rivers originate from the ranges or are fed by tributaries from the catchment.

Water reservoirs have been created by damming river and creeks within the ranges. Wartook Reservoir is formed by a dam on the MacKenzie River, Fyans Creek was dammed to create Lake Bellfield, and the Glenelg River has been dammed for Moora Moora Reservoir and the large Rocklands Reservoir.

There are a number of spectacular waterfalls that attract a high number of visitors each year, including the popular MacKenzie and Silverband Falls.

Marshes and wetlands are common in the low lying land surrounding the Grampians Ranges, including Bryan Swamp at the opening of the Victoria Valley.

Vegetation

Vegetation within the Grampians National Park is highly protected and valued for its diversity and uniqueness. The park contains over 800 indigenous plant species. Over 40 of these, including the Grampians Gum (*Eucalyptus serraensis*) and Grampian Parrot-pea (*Dillwynia oreodoxa*), are found exclusively within the park.

The sheer faces of the rocky outcrops remain heavily forested, which extends down into the surrounding foothills. In some areas plantation forestry creates a border between the remnant bush and cleared farming land at the base of the foothills.

Remnant Grassy Woodlands communities are evident in the landscape surrounding the ranges, with gnarly River Red Gums scattered throughout the pastoral paddocks and running along creek lines.

There is significant native vegetation along roadsides including Eucalypts, Acacias and She-Oaks with a long grassy understory that is remnant of the indigenous character of the area prior to the land being cleared for grazing.

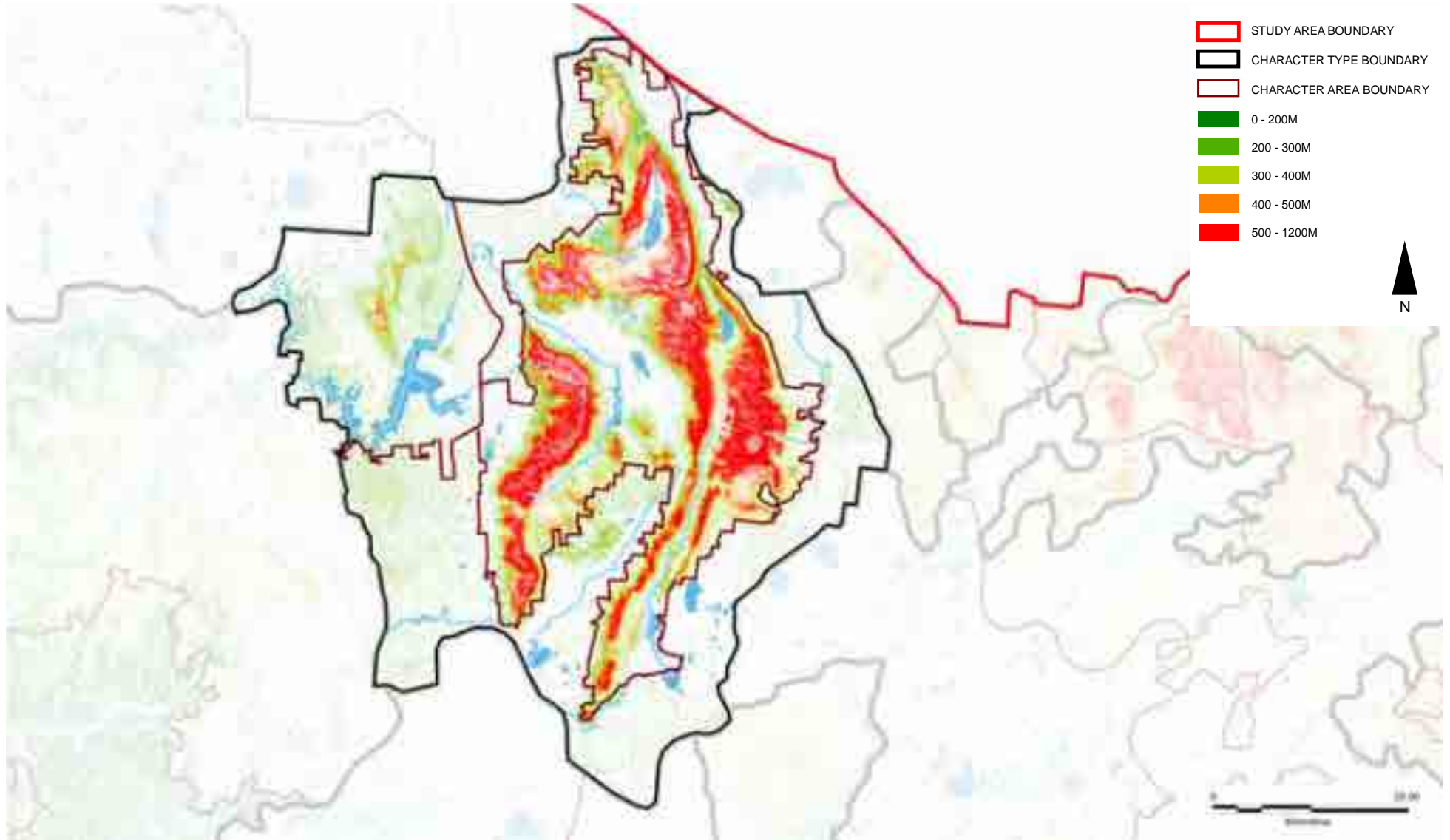
Land Use & Built Form

The Grampians National Park was established for conservation and protection of the landscape in 1982 and remains highly significant containing around one third of Victoria's remnant flora and fauna species. The dramatic rock escarpments, panoramic views, spectacular wildflower displays and picturesque waterfalls attract visitors all year round from a local, national and international scale. The park offers passive and active recreational activities including bush walking, rock climbing, picnicking and fishing.

The region surrounding the Grampians National Park is renowned for its history and continuing production of fine wool which is evident in the amount of land being used for sheep grazing. There are a number of wineries, vineyards and orchards and blue gum plantations are emerging as another popular land use.

Farm buildings and associated outhouses are generally set back from the road and screened by native or exotic shelterbelt planting. The exception to this is shearing and hay sheds and cattle yards which are generally located closer to the roadside. Most of these are modest in scale, there is an absence of large scale industrial farming infrastructure such as silos or storage facilities.

Figure 2 Grampians (Gariwerd) & Surrounds Contours & Waterform



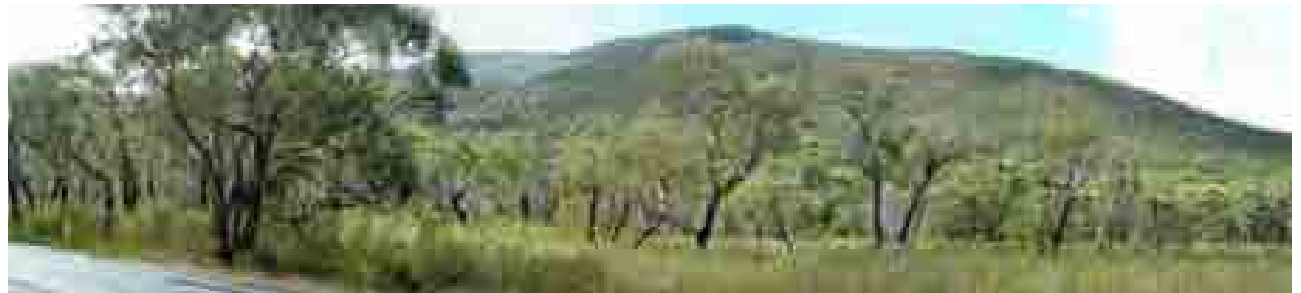
PATTERN OF VIEWING

The Grampians Ranges are a visually spectacular landform. They have a commanding presence, forming a jagged silhouette on the horizon from many locations within the study area. The scale of the ranges intensifies on the approach from many viewing corridors and tourist roads. In some locations remnant roadside vegetation, plantation forestry and shelterbelt planting confines and frames views, which can intensify the viewing experience.

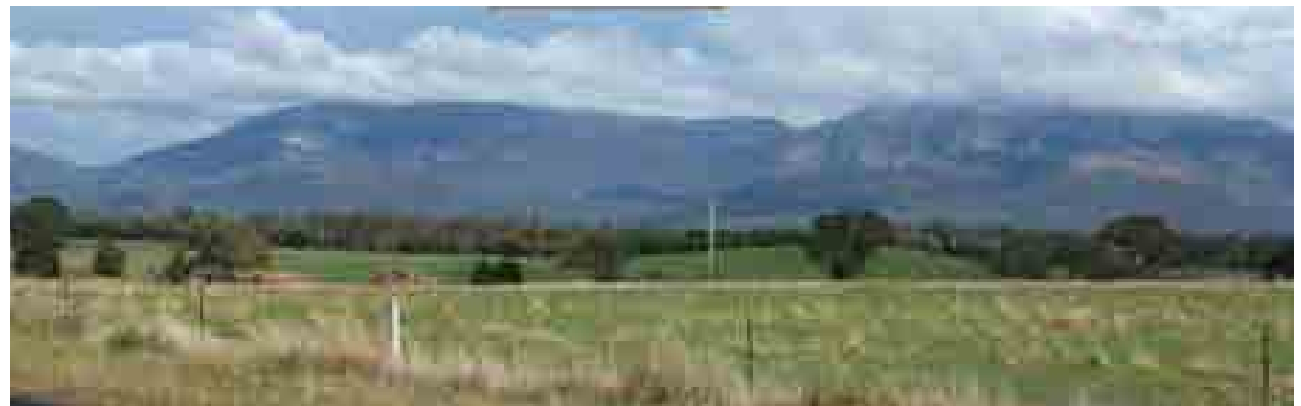
From within the National Park, the ranges tower up above the roads with views to the high peaks filtered through the scrubby vegetation. There are a large number of high vantage points where long range views are available across the ranges, with views either terminating at the surrounding peaks or outwards across the flat agricultural plains to distant horizons.

Major viewing corridors include:

- Henty Highway
- Ararat-Pomonal and Ararat-Halls Gaps Roads
- Glenelg Highway
- Grampians Tourist Road
- Northern Grampians/Mount Victory Road
- Victoria Valley Road



Grampians Road between the Serra and Mount William Ranges



Proximity of the ranges near Moyston



The ranges form an ever-present silhouette on the horizon



Views within the park, from Mount William across the Serra and Mount Difficult Ranges



View across the pastoral plains from Boroka Lookout

LANDSCAPE VALUES

Landscape values include aesthetic (visual and non-visual), historic, environmental, scientific, social and other values. It is acknowledged that many of the values overlap (i.e. a place or item may have historic and social value), but they are generally only listed once. A range of sources have been used to identify the landscape values of the Grampians (Gariwerd) & Surrounds, such as the field survey, existing studies and documentation, and community consultation.

Historic

- Strong evidence of Aboriginal use in the area particularly around Mount William including nearly 100 art sites, mounds, campsites & lithic scatters, and an extensive channel system for trapping eels near Mount William Swamp
- Grampians National Park (Gariwerd)
 - listed on the National Heritage List as a Heritage Landscape which is environmentally & socially significant
 - listed by the National Trust as a nationally significant landscape
 - highest concentration of rock art sites in Victoria
- Massacres & killings of Aborigines occurred in the Type mostly between Hamilton, Horsham & Ballarat in the early-mid 1800s

Environmental/Scientific

- Grampians National Park
 - protected area on the IUCN list, Category II (National Park)
 - protected by National Parks Act 1975, Schedule 2
 - protected by Significant Landscape Overlays (SLO)
 - high level of endemism, range of flora & invertebrates
- Black Range & surrounds, part of the Grampians landscape & has scenic qualities worthy of protection
- Wartook Tourist Area, tourism services & high environmental values
- Two reserves which are protected areas on the IUCN list
- Locally significant vegetation, sites of biodiversity, watercourses, water bodies & wetlands

Social

- Grampians, one of Australia's most spectacular natural tourist attractions
- Great Southern Touring Route between Dunkeld, Halls Gap & Stawell via the Grampians
- Part of the Grampians winery region, a tourist attraction
- Channel, reservoirs & other water bodies which supply domestic & stock water to the region
- Agriculture, also valued for economic reasons



The Grampian Ranges and surrounding area provide habitat for a diversity of native animals

Remnant River Red Gums are an important visual and ecological element of the landscape



Landslip on the Mount William Range occurred after heavy flooding

CHANGE IN THE LANDSCAPE

Landscape Morphology

The Grampians Ranges were once the edges of an inland sea that covered a large part of Victoria millions of years ago. Layers of sandstone were laid down during this time and eventually tectonic forces caused the uplifting and folding of the shoreline. The resulting ridges have been weathered by wind, rain and flowing rivers, leaving behind the jagged formations seen today. Surrounding the ranges there is evidence of volcanic activity in the form of granitic upwellings.

Archeologists have estimated that Aboriginal people have lived in the Grampians Ranges for over 20 000 years. Gariwerd played a central role in the creation stories of the Jarwadjali and Djab Wurrung people, and many rock art sites are found within the park.

The surveyor-general of New South Wales, Major Thomas Mitchell, made his journey through the region in 1836 and named the Grampians Ranges after a mountain range in his homeland of Scotland. His descriptions of the excellent surrounding pastoral land were followed by rapid European settlement, with squatters bringing their flocks of sheep and cattle with them. To accommodate this, the landscape surrounding the ranges was divided into pastoral properties and cleared for agricultural production.

The first tourists were drawn to the natural beauty of the region in the 1880s. Mining and timber harvesting also brought many people to the area, dramatically altering the landscape. A number of Melbourne's great public buildings including the GPO, State Library and Parliament House were constructed from Grampians Freestone mined at Mount Difficult Quarry. In the early 1900s a

short-lived gold rush occurred after gold was discovered at Mafeking.

The Grampians Ranges were declared a National Park in 1984 to conserve the diversity of flora and fauna species and to protect the outstanding land formation. This saw the end of timber harvesting within the park.

In 2006 nearly 50% of the National Park was devastated by bushfire, and again in February 2013 bushfires damaged numerous areas. In January 2011 severe flooding caused much landslip and damage within the park which resulted in the closure of many roads, tracks and camping grounds.

Sensitivity to Change

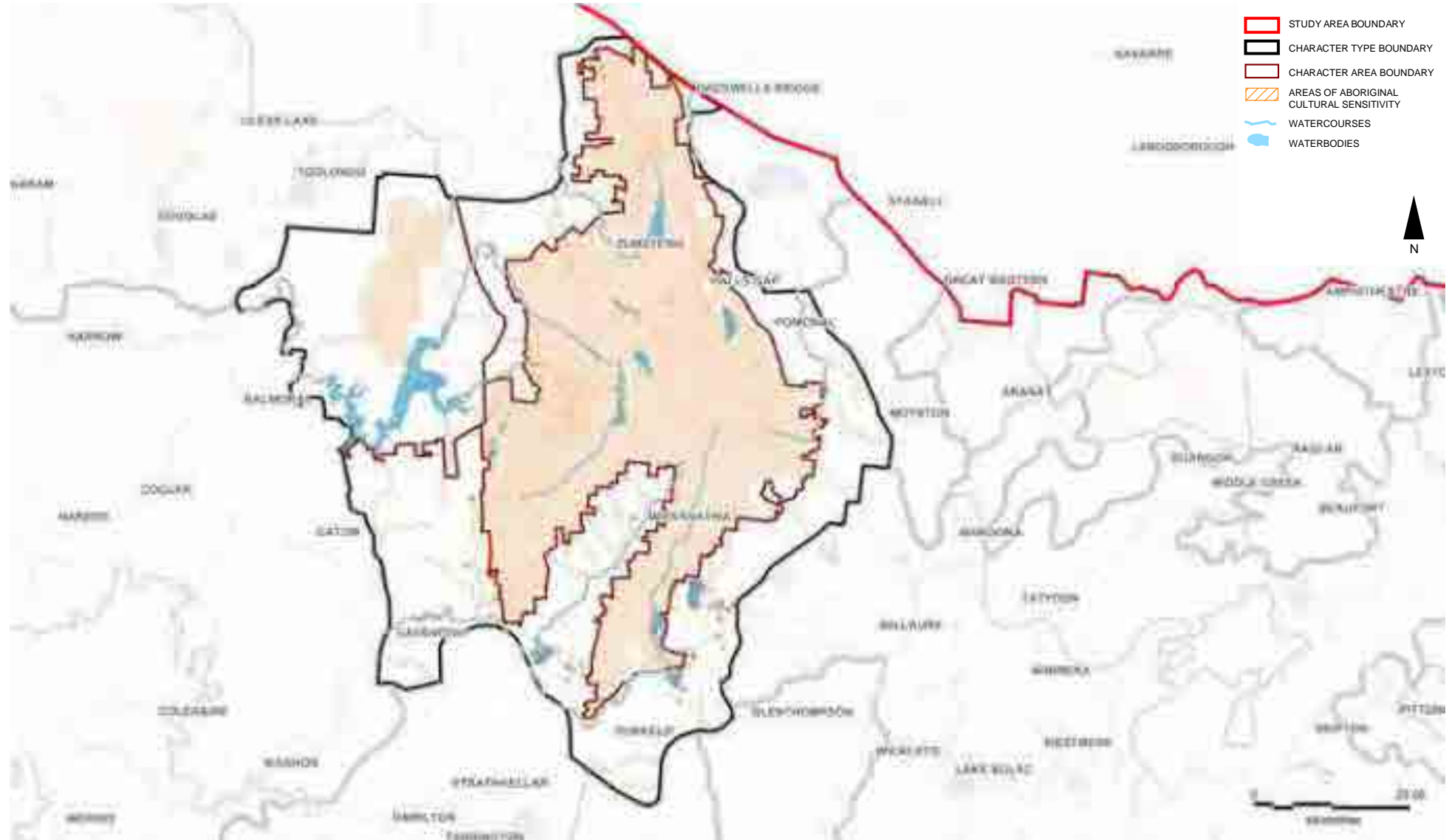
Land surrounding the national park is moderately sensitive to change. The land is generally flat to slightly undulating, therefore development has the potential to be prominent. However there is still a substantial amount of vegetation cover which assists in masking it from view.

The ridges and slopes of the ranges are highly sensitive to change. They are a prominent feature on the landscape, visible from long distances.

Anticipated Landscape Change

- Impacts associated with major storm or weather events such as fire, or flood and landslip
- Plantation forestry will see ongoing cycles of change, from the establishment of young trees to the clearing of land and scarring on the landscape when timber is harvested
- There has been a long history of sheep farming and wool production, though this is subject to change with fluctuations in the market
- Rising salinity in some areas will have an impact on how the surrounding land is farmed
- More intensive farming practices including plantation forestry
- The State Governments planning zones review may lead to an increase in tourism, retail and accommodation uses in rural areas, a potential increase in rural living density and a potential increase in smaller lots and dwellings in the farming zone.

Figure 3 Grampians (Gariwerd) & Surrounds Cultural Heritage Sensitivity



FUTURE LANDSCAPE CHARACTER DIRECTIONS

The Grampians (Gariwerd) and Surrounds should remain a productive agricultural landscape, the experience of which will remain heightened by retention of views to the dramatic backdrop of the Grampians Ranges.

Development will be carefully sited and well integrated within the landscape, with minimal impact on view lines towards both the Grampians and Black Ranges. Indigenous and native vegetation will continue to remain a dominant characteristic of the area, with River Red Gums scattered throughout paddocks, along roadsides, and occasionally in large stands. Gradual evolution of the rural character of the area should be encouraged, including the development of new farming practices and crops where viable and appropriate. Revegetation of less productive farmlands and areas of environmental degradation will be encouraged.

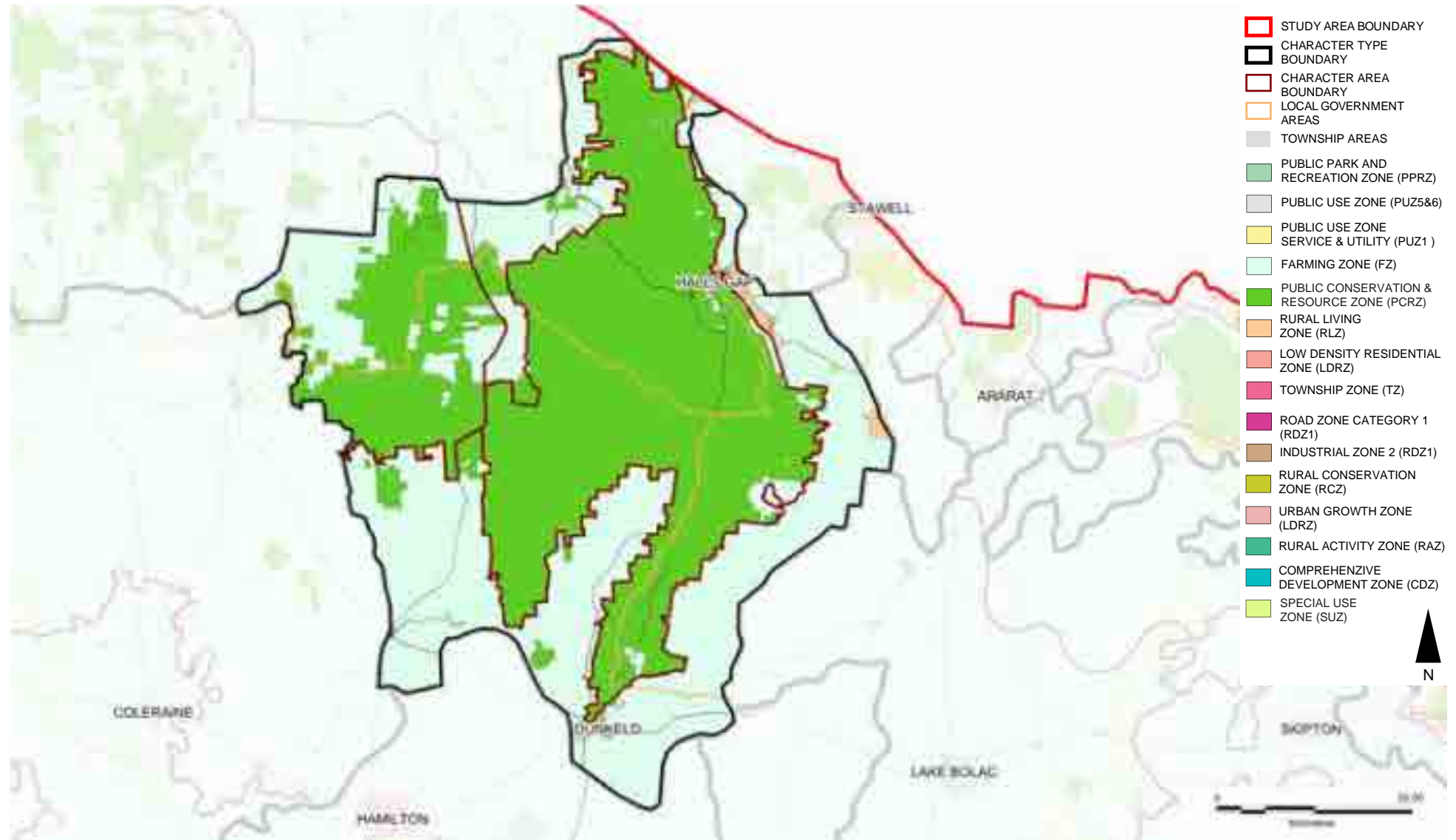
Opportunities

- Ongoing preservation of land for conservation and recreation

Threats

- Removal or loss of native vegetation
- Loss of isolated paddock trees including the ancient River Red Gums
- Fragmentation of land, particularly areas surrounding townships
- Draining of wetlands and swamps for agriculture
- Large sheds or farming infrastructure located close to the roadside that dominates the landscape and blocks significant views to the Grampians
- Buildings or infrastructure located on ridge lines or prominent slopes
- Timber plantations that result in unnaturally dense areas of vegetation and have a serious impact upon the landscape when harvested
- Salinity, particularly in the Victoria Valley
- Channel modification (reference to rivers, estuaries and floodplains)
- Degradation of riparian vegetation
- Drainage of wetlands
- Uncontrolled stock access
- Sedimentation
- Habitat fragmentation/reduced connectivity
- Significant disturbance events (fire, flood, storms)

Figure 4 Grampians (Gariwerd) & Surrounds Zones



LANDSCAPE PROTECTION & MANAGEMENT

Planning Scheme Policies & Controls

This Character Type is subject to the Ararat, Horsham, Southern Grampians and Northern Grampians Planning Schemes.

Key Zones

- Farming Zone (FZ)
- Public Conservation & Resource Zone (PCRZ)
- Rural Living Zone (RLZ)
- Special Use Zone (SUZ)

Key Overlays

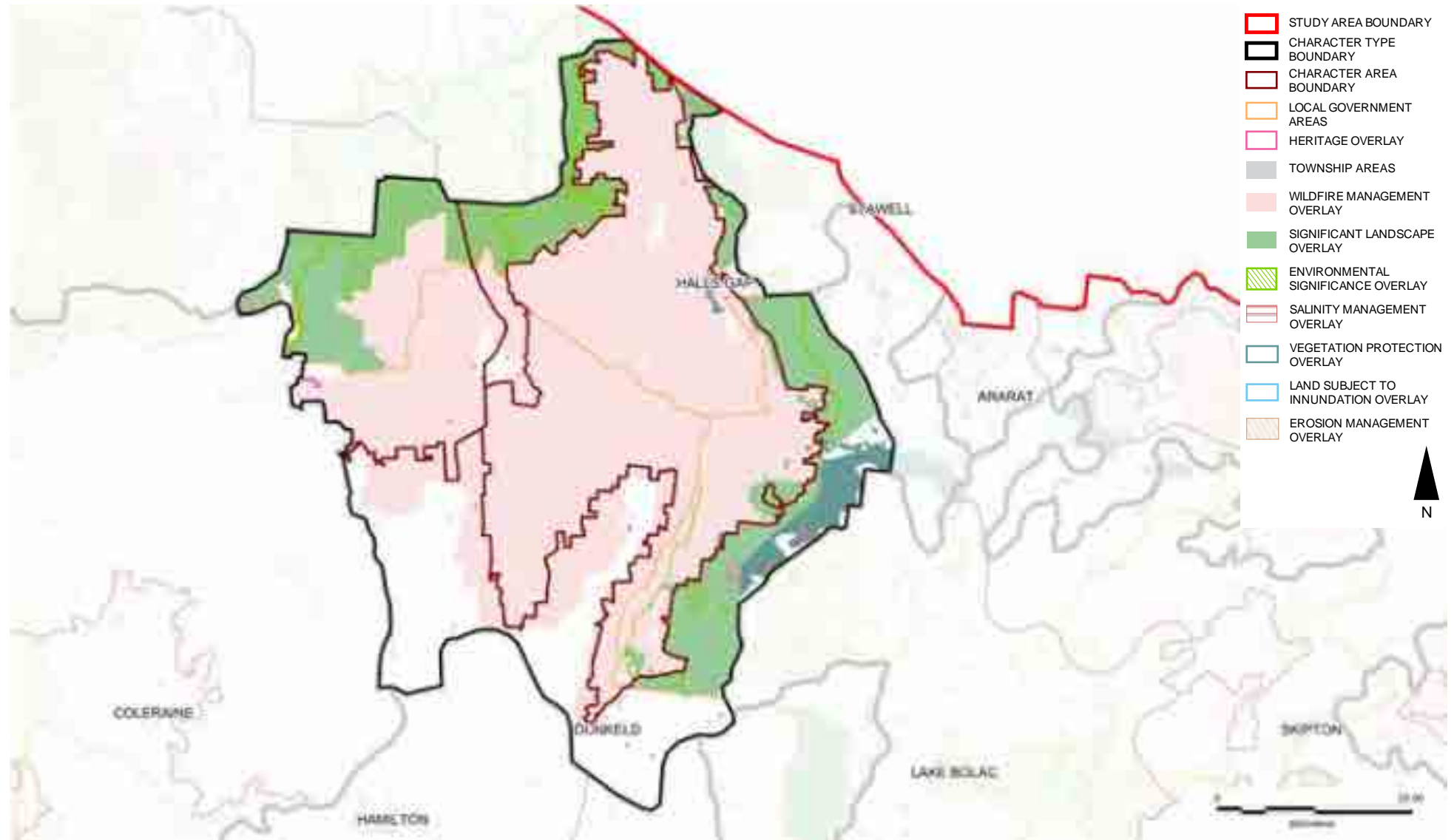
- Significant Landscape Overlay (SLO)
- Environmental Significance Overlay (ESO)
- Heritage Overlay (HO)
- Vegetation Protection Overlay (VPO)
- Wildfire / Bushfire Management Overlay (WMO / BMO)
- Land Subject to Inundation Overlay (LSIO)
- Design & Development Overlay (DDO)

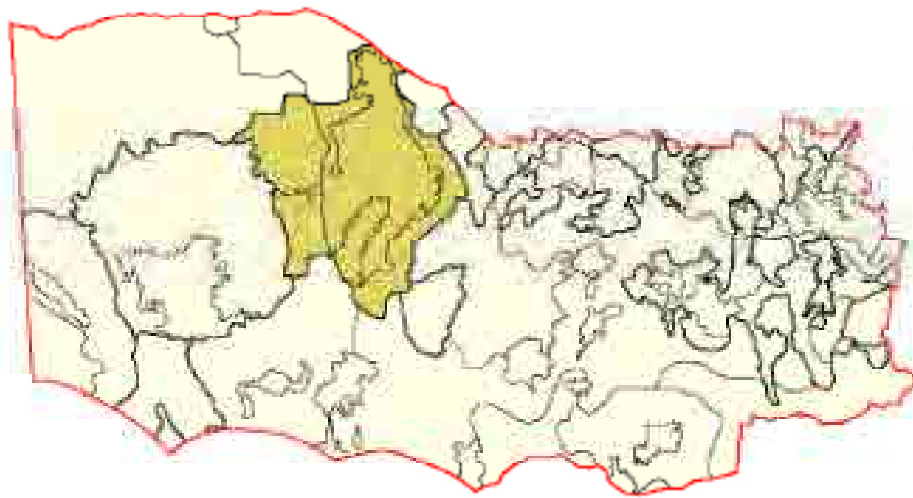
Landscape Management Objectives

To achieve the future landscape character directions for the Grampians (Gariwerd) and Surrounds, , the following landscape management objectives are recommended:

- To protect and enhance remnant indigenous vegetation as an important character element.
- To protect the scenic backdrop created by the Grampians Ranges National Park and minimise any impact on view lines towards the mountains.
- To minimise the visual impact of buildings and structures within the natural landscape.
- To maintain an overall sense of spaciousness within the landscape.
- To ensure buildings and structures demonstrate a high standard of design and respond to the character of the surrounding environment.
- To recognise the ongoing agricultural use of the land with areas of open grazing as an important character element.
- To minimise the visual impact of timber production and other agro-forestry industries upon the natural landscape.
- To encourage revegetation of less productive farmlands and areas of environmental degradation throughout the landscape.
- To incorporate best practice environmental sustainability principles

Figure 5 Grampians (Gariwerd) & Surrounds Overlays





Landscape Management Guidelines

Grampians & Surrounds

Landscape Management Guidelines

Landscape Element	Objective	Design Response	Avoid
INDIGENOUS VEGETATION	To protect and enhance remnant indigenous vegetation as an important character element, especially remnant River Red Gums.	<p>Where practical, protect and rehabilitate significant stands of remnant indigenous vegetation, particularly at roadsides, throughout paddocks, and along river and creek corridors, subject to considerations such as farming requirements, fire protection and safety.</p> <p>Encourage farmers to protect and manage River Red Gums by fencing around old trees, trimming diseased or shattered branches, leaving dead trees standing for wildlife habitat (where practical), and planting new trees, particularly in bare paddocks.</p> <p>Minimise indigenous vegetation removal in new development, particularly remnant River Red Gums.</p> <p>Where vegetation loss cannot be avoided, balance the loss of vegetation with rehabilitation on the site or nearby areas, and replace any native or indigenous trees lost with indigenous trees that will grow to a similar size.</p> <p>Screen buildings, structures and large areas of hard surfaces with appropriately scaled indigenous and/or native vegetation that is appropriate to the landscape character of the area.</p> <p>Consider the existing landscape character of the area as a guide to the selection of vegetation and the layout of private gardens.</p> <p>Reinforce vegetative linkages to natural features such as the Grampians Ranges National Park, Black Range State Park and existing river and creek environs.</p> <p>Encourage the removal of environmental weeds and their replacement with local indigenous species.</p>	<p>Loss of significant stands of vegetation, particularly remnant River Red Gums.</p> <p>Ad hoc clearing and removal of vegetation.</p> <p>Development which requires permanent clearing of vegetation.</p> <p>Lack of landscaping and substantial vegetation in new development.</p> <p>Landscaping that provides little connection to the surrounding natural environment and existing landscape character.</p> <p>Hard surfaces and hard edges in landscaping.</p> <p>Continuous spreading / planting of environmental weeds.</p> <p>Degradation of significant flora.</p> <p>New exotic shelterbelts adjacent to identified viewing corridors.</p>

Landscape Element	Objective	Design Response	Avoid
INDIGENOUS VEGETATION (CONTINUED)		Encourage the planting of indigenous shelterbelts, as opposed to exotic, adjacent to identified significant viewing corridors.	
PLANTATION FORESTRY	To encourage the appropriate siting and design of plantations that protects the character and viewing of the Grampians, Black Range and surrounding landscape.	<p>Encourage agro forestry (integration of forestry trees with grazing stock or other crops) as an alternative to tree plantations in areas of identified landscape significance.</p> <p>Strongly discourage plantations in the foreground of views to the Grampians Ranges along identified significant viewing corridors.</p> <p>Soften the boundaries of plantations using sympathetic boundary lines (i.e. not incongruous to the surrounding landscape), gradual changes in density or age class, or with use of a species of different form, colour and texture.</p> <p>Where possible, ensure that plantation design follows existing landscape lines such as gullies, spurs, ridges, other contour lines, tree lines, creek lines etc., and avoids lines that are incongruous to the surrounding landscape e.g. property or fence lines that are geometric in nature rather than free flowing.</p> <p>Minimise the visual impact of plantations by:</p> <ul style="list-style-type: none"> ▪ Creating small, curvilinear coupes that blend with the landscape. ▪ Avoiding geometrically shaped harvest areas that contrast with the natural forms and lines of the landscape. ▪ Sequencing operations over time. ▪ Avoiding harvest areas that breach the skyline in middle or background views. ▪ Maintaining visual permeability through an open or clumped planting density, or non-uniform thinning technique. 	<p>Plantation forestry that is solid at the roadside and blocks outviews, particularly those from identified significant viewing corridors.</p> <p>Plantations in prominent locations that will create visual scars with periodic harvesting.</p> <p>Loss of scenic outviews from roads and lookouts.</p> <p>Plantation design that is incongruous to the surrounding landscape.</p>

Landscape Element	Objective	Design Response	Avoid
PLANTATION FORESTRY (CONTINUED)		Ensure that proposed timber plantations are accurately depicted and executed through a 'Timber Management Plan' as required within the Code of Practice for Timber Production.	
VIEWS & VISTAS	<p>To protect the scenic backdrop created by the Grampians Ranges National Park and the Black Range State Park.</p> <p>To protect and enhance identified significant views.</p>	<p>Development should be avoided in the foreground (up to 500 metres from the viewing location) of views of the Grampians and Black Ranges, particularly identified significant views, or designed and sited to retain the character and scenic qualities of the views from that location.</p> <p>Buildings, structures and other development should be set back from identified viewing corridors, and designed and sited to minimise visual intrusion (e.g. low building heights, minimal building footprints, appropriate colours and materials to the setting, and integration with vegetation).</p> <p>Consider the cumulative impact of developments visible from identified significant viewing corridors, other roads and key viewing locations, on the character and views of the surrounding landscapes.</p> <p>Design vegetation planting and regeneration works to retain views towards the Grampians Ranges National Park and Black Ranges State Park where possible.</p>	<p>Unsympathetic / intrusive buildings and structures that obscure prominent views.</p> <p>Conspicuous or incongruous (out of place) buildings, structures or infrastructure visible in the foreground of views to the Grampians and Black Ranges.</p> <p>Vegetation that disrupts prominent views towards the Grampians National Park and Black Range State Park.</p>
BUILDINGS & STRUCTURES: SITING	<p>To minimise the visual impact of buildings and structures on the natural landscape.</p> <p>To maintain an overall sense of spaciousness within the landscape.</p> <p>To recognise the ongoing agricultural use of the land as an important character element.</p>	<p>Ensure that buildings, structures and other infrastructure are sited:</p> <ul style="list-style-type: none"> ▪ Within existing clusters of buildings where possible. ▪ Away from visually prominent locations such as ridge lines and hill faces. ▪ Away from landscape features such as river and creek corridors. ▪ Among established vegetation and/or screened with substantial landscaping of locally appropriate species. 	<p>Buildings and structures that are visually dominant or located in prominent locations.</p> <p>Buildings and structures that break the ridgeline silhouette.</p> <p>Development of residences and other buildings and structures at the roadside.</p>

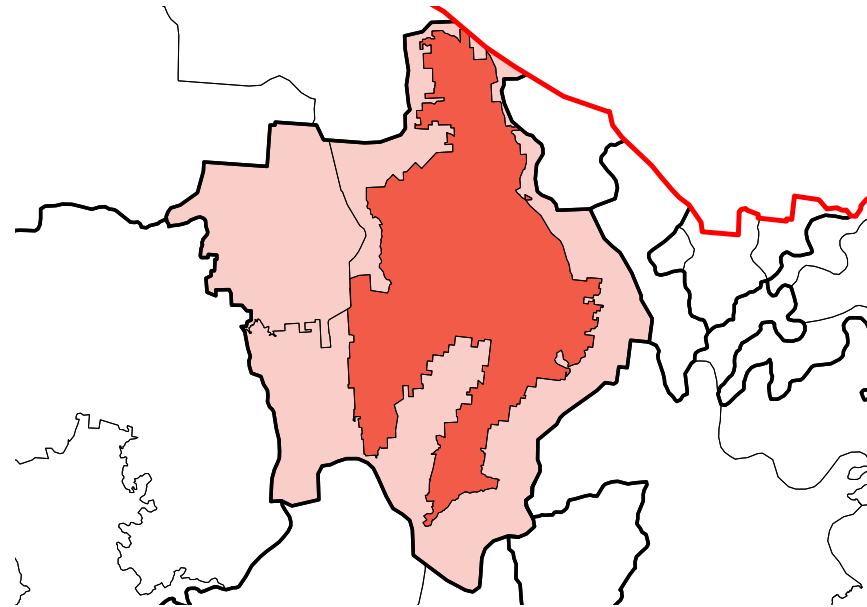
Landscape Element	Objective	Design Response	Avoid
<p>BUILDINGS & STRUCTURES: SITING (CONTINUED)</p>		<ul style="list-style-type: none"> ▪ To follow the contours and/or natural form of the landscape. ▪ Away from landscape features such as volcanic cones, craters and lakes, lava flows and rocky outcrops. ▪ To minimise visibility from identified significant viewing corridors and other main roads. <p>Where development cannot be avoided on prominent hill faces or in steep locations:</p> <ul style="list-style-type: none"> ▪ Site development in the lower one third of the visible slope, wherever possible. ▪ Integrate buildings and structures with existing vegetation, and/or establish settings of indigenous vegetation. ▪ Design buildings to follow the contours or step down the slope to minimize earthworks. ▪ Articulate buildings into separate elements, and avoid visually dominant elevations. <p>In open rural areas, ensure that buildings and structures are set back sufficient distances from roads to ensure minimal visual intrusion.</p> <p>Prevent ribbon development along identified significant viewing corridors and other main roads, including the outskirts of settlements.</p> <p>Minimise the number and floor area of storage areas, outbuildings and ancillary structures, wherever possible.</p>	<p>Buildings and structures that impact on the character and environmental quality of watercourses.</p> <p>Buildings and structures that do not have sufficient vegetative screening.</p> <p>Buildings that do not follow the natural contours of the site, and require excessive cut and fill.</p> <p>Conspicuous or intrusive developments on prominent hill faces.</p> <p>Numerous storage areas / outbuildings on a site.</p> <p>Scattering of buildings and structures across a site.</p> <p>Visual clutter.</p> <p>Buildings and structures that protrude above the dominant tree height of the vegetated (or proposed vegetated) backdrop.</p>
<p>BUILDINGS & STRUCTURES: DESIGN</p>	<p>To ensure buildings and structures demonstrate a high standard of design and respond to the character and significance of the surrounding landscape.</p>	<p>Ensure that the design and external appearance of buildings and structures complement the surrounding landscape by:</p> <ul style="list-style-type: none"> ▪ Using simple, pared-back building forms and design detailing, with consideration of the Australian rural architectural vernacular. 	<p>Buildings or structures that do not harmonise with the character of the surrounding natural / rural environment.</p>

Landscape Element	Objective	Design Response	Avoid
BUILDINGS & STRUCTURES: DESIGN (CONTINUED)	To incorporate best practice environmental sustainability principles in building siting and design.	<ul style="list-style-type: none"> ▪ Utilising colours and finishes that best immerse the building within the landscape and minimise contrast with the surrounds (such as muted colours and matte finishes, or corrugated iron or timber that will weather over time). ▪ Using a mix of contemporary and traditional rural materials, textures and finishes including timber, stone, brick and corrugated iron. ▪ Making use of building materials with minimal environmental impact and encouraging the use of recycled materials where possible. ▪ Utilising materials and finishes that reduce distant visibility (e.g. darker colours on hill slopes, and lighter colours on sky lines.) <p>Ensure that development does not visually overwhelm the landscape setting by:</p> <ul style="list-style-type: none"> ▪ Designing building and structures of a scale that does not dominate the surroundings. ▪ Achieving a minimal building footprint, and ensuring that adequate space is available on the site for the retention of existing vegetation and/or new landscaping. ▪ Using building forms and heights that sit beneath the existing or future tree canopy height. <p>Utilise open style fencing that is not visually obtrusive and is traditionally used in rural areas, such as post and wire or post and rail fencing.</p> <p>Incorporate best practice environmental sustainability principles into the design and construction of all new buildings.</p>	<p>Ad hoc or large scale urban development outside of settlements.</p> <p>Large, bulky building masses / footprints that are conspicuous elements within the spacious landscape setting.</p> <p>Sheer, visually dominant elevations.</p> <p>Mock historical style buildings with excessive use of ‘reproduction’ or decorative detailing.</p> <p>Highly colourful materials and finishes.</p> <p>Building design that has little or no regard to environmentally sustainable design practices, such as residential buildings with excessive western or southern orientation.</p> <p>High, solid or non-permeable fencing.</p>

Landscape Element	Objective	Design Response	Avoid
SIGNAGE & INFRASTRUCTURE	To minimise the visual impact of signage and infrastructure, particularly when visible from identified significant viewing corridors and viewing locations.	<p>Group signage, including tourism signage, at particular locations to minimise visual impact, avoid signage clutter, and to maintain scenic outlooks.</p> <p>Infrastructure should be sited to avoid highly scenic locations, particularly identified significant views, and in the case of powerlines and other utility services, be underground wherever possible.</p> <p>Locate powerlines, access tracks and other infrastructure in areas of low visibility, preferably in previously cleared locations.</p> <p>Use materials and colours that minimise contrast with the surrounding landscape and distant visibility, and use vegetation to screen infrastructure from identified significant viewing corridors, viewing locations and other main roads.</p> <p>All new infrastructure development should be accompanied by a landscape plan utilising appropriate indigenous plant species and demonstrating how the affected area will be screened and remediated after development.</p>	<p>Signage clutter in the landscape.</p> <p>Visually obtrusive and/or colourful signage in natural landscape settings.</p> <p>Highly visible infrastructure.</p> <p>Infrastructure that dominates views, particularly from identified significant viewing corridors or locations.</p> <p>Landscape scarring as a result of vegetation removal.</p> <p>No consideration of siting, design, vegetation or remediation in association with the development of infrastructure.</p>

Landscape Element	Objective	Design Response	Avoid
CULTURAL HERITAGE VALUES	<p>To protect and respect the cultural heritage values of the Grampians and surrounds landscape.</p> <p>To encourage landscape change that is consistent with the cultural heritage values of the Grampians and surrounds landscape.</p>	<p>Relate landscape character to the relevant heritage values of significant places by setting back, avoiding or carefully designing buildings, structures and other landscape alterations.</p> <p>Identify and preserve landscape conditions and settings of places of Aboriginal cultural heritage value.</p> <p>Respect the Aboriginal cultural heritage values of significant places by setting back, avoiding or carefully designing buildings, structures and other landscape alterations to avoid impacts on places, objects or landscapes that have Aboriginal heritage value.</p>	<p>Loss of cultural heritage values associated with the landscape.</p> <p>No regard for the cultural heritage values of the landscape in new development.</p>
SETTLEMENT EDGES	<p>To contain existing settlements and prevent their unchecked expansion into the surrounding landscape.</p>	<p>Ensure that settlements maintain their individual character and physical distance from each other.</p> <p>Ensure settlements have a definite visual edge, delineating the boundary between urban development and the natural / rural landscape beyond.</p> <p>Carefully site buildings and structures at settlement edges to integrate with existing topography and vegetation.</p>	<p>Development 'clutter' at the edges to settlements.</p> <p>The expansion of rural residential development into the landscape.</p> <p>Ribbon development between settlements.</p> <p>Suburban style residential development, with large areas of hard paving, in the rural environment.</p> <p>Lack of vegetation in rural residential areas.</p>
PLANTATION FORESTRY	<p>To encourage the appropriate siting and design of plantations that protects the character and viewing of the Grampians, Black Range and surrounding landscape.</p>	<p>Encourage agro forestry (integration of forestry trees with grazing stock or other crops) as an alternative to tree plantations in areas of identified landscape significance.</p> <p>Strongly discourage plantations in the foreground of views to the Grampians Ranges along identified significant viewing corridors.</p>	<p>Plantation forestry that is solid at the roadside and blocks outviews, particularly those from identified significant viewing corridors.</p> <p>Plantations in prominent locations that will create visual scars with periodic harvesting.</p>

Landscape Element	Objective	Design Response	Avoid
<p>PLANTATION FORESTRY (CONTINUED)</p>		<p>Soften the boundaries of plantations using sympathetic boundary lines (i.e. not incongruous to the surrounding landscape), gradual changes in density or age class, or with use of a species of different form, colour and texture.</p> <p>Where possible, ensure that plantation design follows existing landscape lines such as gullies, spurs, ridges, other contour lines, tree lines, creek lines etc., and avoids lines that are incongruous to the surrounding landscape e.g. property or fence lines that are geometric in nature rather than free flowing.</p> <p>Minimise the visual impact of plantations by:</p> <ul style="list-style-type: none"> ▪ Creating small, curvilinear coupes that blend with the landscape. ▪ Avoiding geometrically shaped harvest areas that contrast with the natural forms and lines of the landscape. ▪ Sequencing operations over time. ▪ Avoiding harvest areas that breach the skyline in middle or background views. ▪ Maintaining visual permeability through an open or clumped planting density, or non-uniform thinning technique. <p>Ensure that proposed timber plantations are accurately depicted and executed through a 'Timber Management Plan' as required within the Code of Practice for Timber Production.</p>	<p>Loss of scenic outviews from roads and lookouts.</p> <p>Plantation design that is incongruous to the surrounding landscape.</p>



Character Area 6.1

The Grampians Ranges

6.1 THE GRAMPIANS RANGES

This Character Area encompasses the jagged peaks and hills of the Grampian Ranges and the heavily forested surroundings that are included in the National Park boundaries. Development within the park is minimal, consisting mostly of access roads, tourism infrastructure and amenities and occasionally power lines and radio towers on high peaks.

Key Features

- Steep, jagged sandstone escarpments
- Diverse vegetation communities
- Low, rounded foothills
- Spectacular waterfalls
- Diversity of walking and access tracks

Settlements

- Halls Gap



Wartook Reservoir as seen from the Reed Lookout



Stunning views over the surrounding plains



Rich ecological environment

Figure 1 The Grampians Ranges Overview

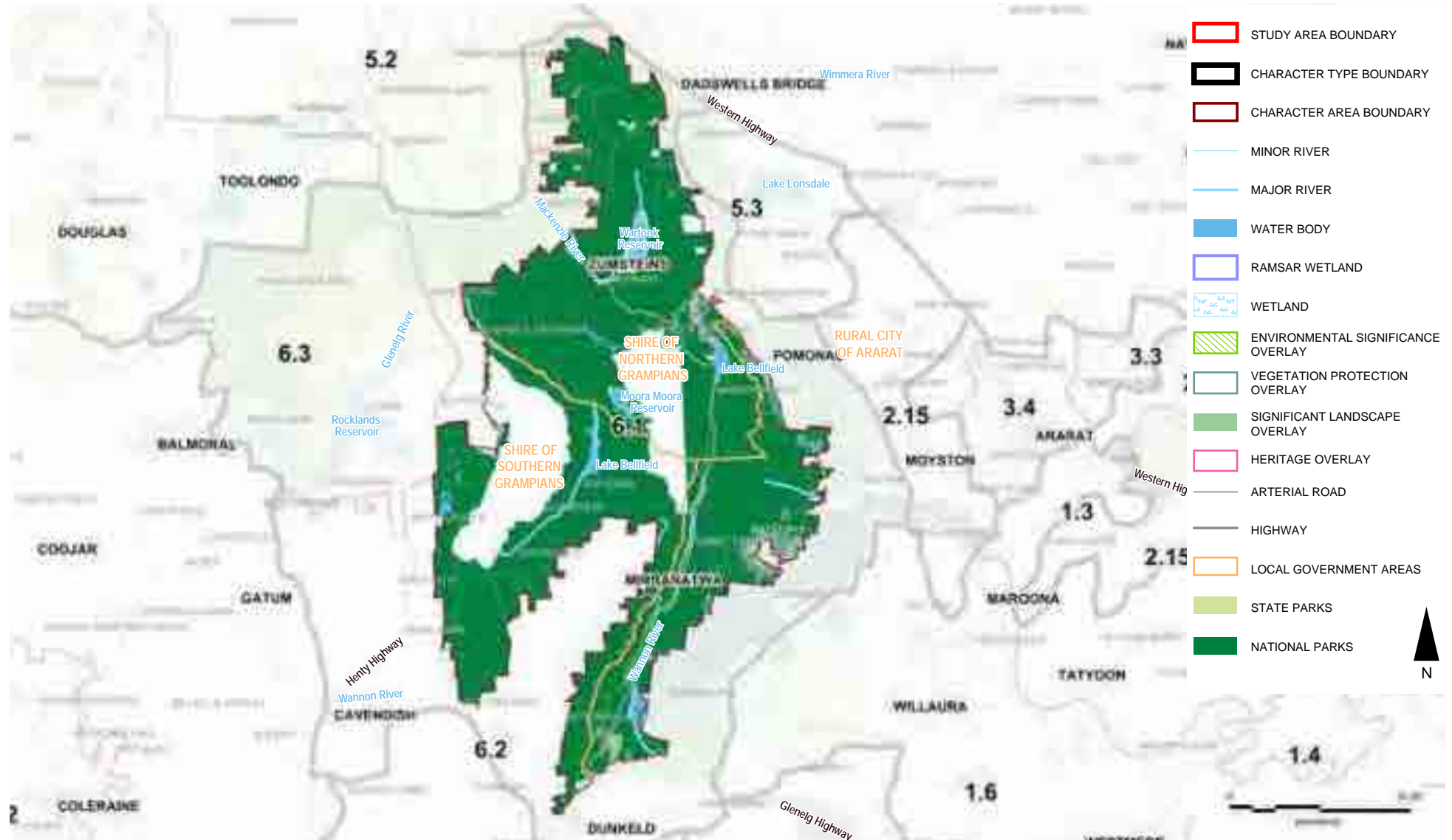


Figure 2 The Grampians Ranges Landform

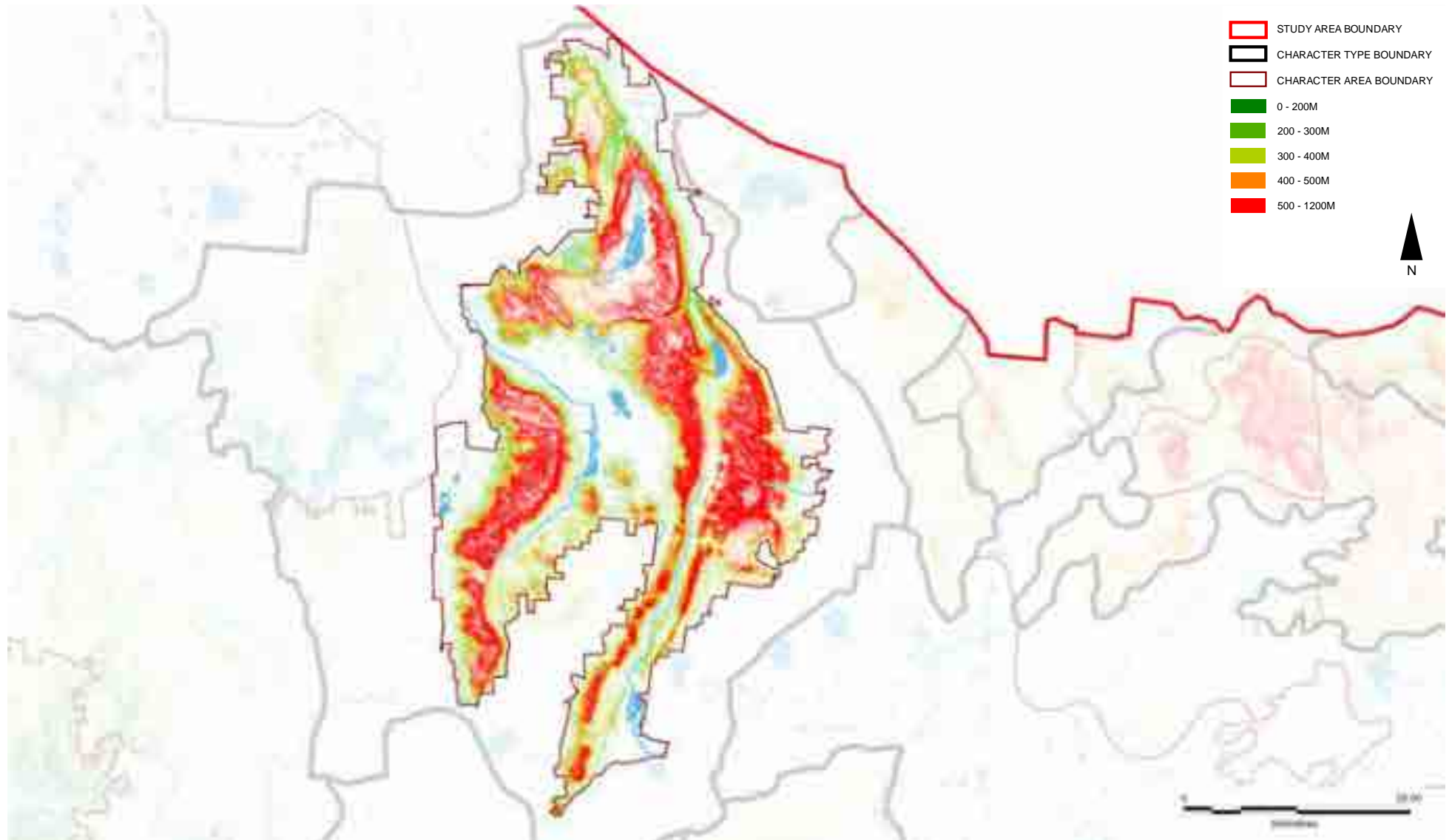


Figure 3 The Grampians Ranges Aerial



PATTERN OF VIEWING

There are a high number of tourist roads and tracks throughout the Grampians Ranges National Park from which breathtaking views are available. Of these the two most widely travelled and visually spectacular are the Grampians Tourist Road and the Northern Grampians / Mount Victory Road.

The Grampians Tourist Road runs from Dunkeld in the south to Halls Gap, and is a stunning drive through the valley of the Serra and Mount William Ranges. The steep escarpments rise up on either side of the road and allow intimate views to the highly textured rock faces. These are filtered through the roadside vegetation, that at times creates an enclosed canopy overhead, then opens out to provide spacious outward views.

The Northern Grampians/Mount Victory Road constructed in 1923 was the first tourist road to be built in the Ranges. It winds high above the valley of the Mackenzie River from Wartook to Halls Gap. The road is cut into the steep valley walls and views are available down the sheer drop at the roadside to the precipitous cliff faces opposite.

The National Park has a number of spectacular scenic lookout points, some of which capture views over the ranges or out over the surrounding pastoral land. The Reed Lookout / Balconies provide exceptional views over the Victoria Valley to the south, and Lake Wartook and the Mount Difficult Range to the north. The Reed Lookout is accessible by car and the Balconies involves a 2km return walk.

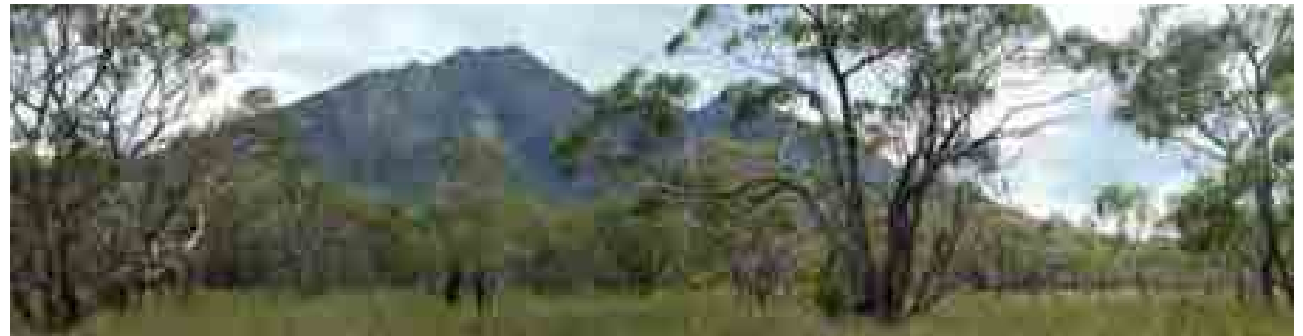
There are many walking trails to other well known lookouts within the National Park. These range from short gradual climbs (25 minutes return) to more steep and strenuous hikes (3 hours return).

These include (but are not limited to) the Chimney Pots, The Picaninny, Mount Sturgeon, Mount Abrupt, Paddy Castle, Mount Thackery, Boroka Lookout and The Pinnacle.

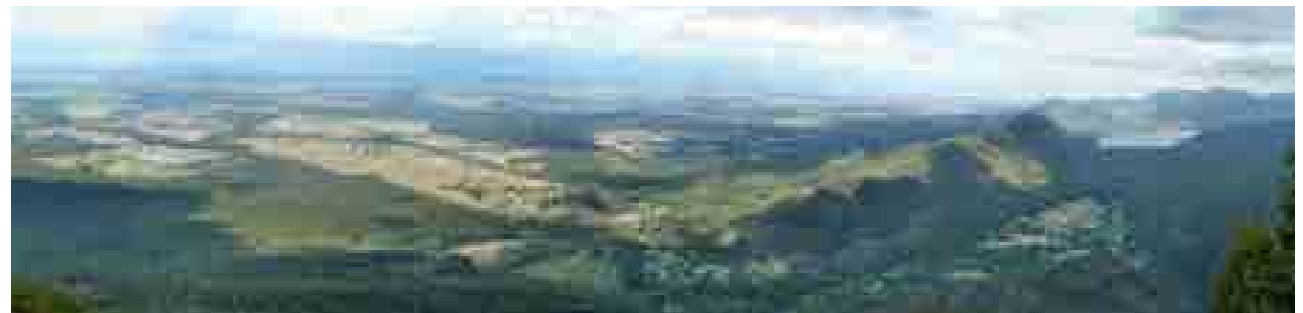
More intimate bush views are heightened by waterfalls, the most popular and accessible being the MacKenzie Falls and Silverband Falls.



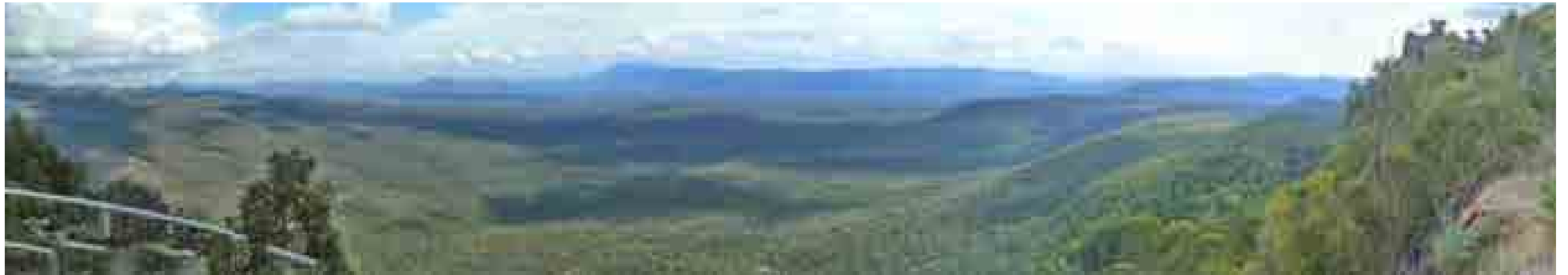
MacKenzie Falls



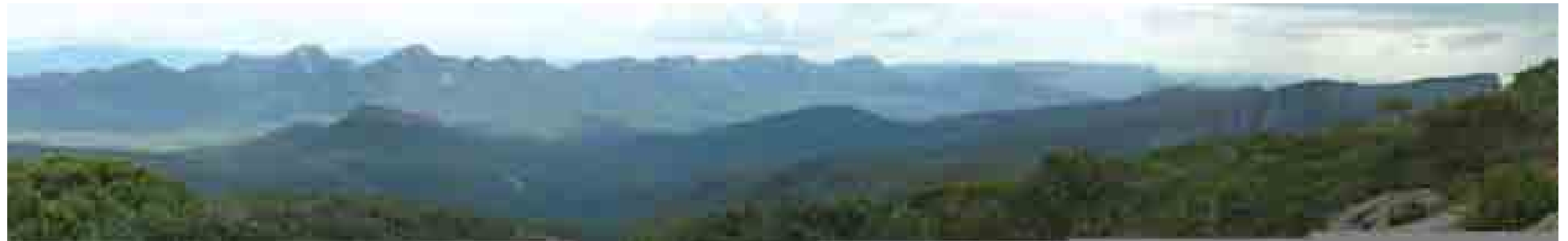
Grampians Road between the Serra and Mount William Ranges



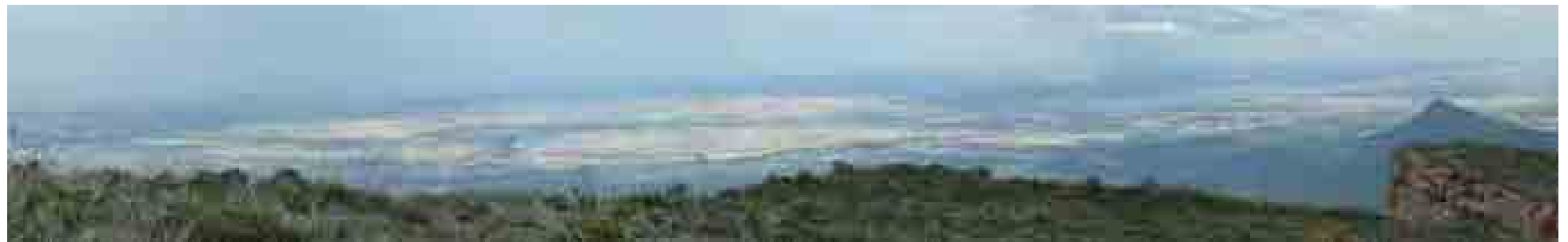
Boroka Lookout shows the township of Halls Gap nestled between the Mount William and Serra Ranges



Reed Lookout with views across the Victoria Valley to the Victoria Range beyond



Mount William Climb, views towards the Serra Range, with the Victoria Range in the distant background



Mount William Summit, with views over the surrounding pastoral land

LANDSCAPE VALUES

Historic

- Grampians National Park (Gariwerd), listed on the National Heritage List as a Heritage Landscape and listed by the National Trust as a nationally significant landscape due to its:
 - dramatic landform with sweeping western slopes, craggy eastern peaks & massive sandstone cliffs that contrast with the surrounding plains
 - most important for floristic richness & endemism in eastern inland Australia
 - nationally significant for richness in terrestrial & freshwater invertebrates
 - densest concentration of rock art paintings in Victoria & has the single largest assemblage of Aboriginal art motifs in Victoria
 - important as a defining image in Australia that has inspired Australian artists in a range of media including painting (Arthur Streeton & Arthur Boyd), poetry, literature, photography & film
- Rockshelters with aboriginal rock art, Grampians National Park, identified in Gib Wettenhall's *The People of the Gariwerd* (1999) are:
 - Gulgurn Manja, richest art site in northern Gariwerd-Grampians ranges with over 190 motifs
 - Ngamadjidj, art panel with animated figures, completely different in colour & style to other northern Gariwerd art sites
 - Billimina, largest & most spectacular art site in Victoria
 - Manja, more hand stencils than any other rock site in Victoria

- Other evidence of Aboriginal use in the Area, including:
 - mounds, campsites & lithic scatters in the Mount William area, and an extensive channel system for trapping eels near Mount William Swamp,
 - series of earth ditches, a very complex & unique aboriginal construction, seen in 1841 by Robinson who was crossing swampy country somewhere between Mount Sturgeon & Mount William

Environmental/Scientific

- Grampians National Park (Gariwerd)
 - protected area on the IUCN list Category II (National Park)
 - protected by National Parks Act 1975, Schedule 2B
 - protected by Ararat & Northern Grampians SLO1
- Locally significant watercourses, water bodies & wetlands, protected by Ararat ESO2
- Native vegetation which characterises the Halls Gap & Lake Bellfield area, protected by Northern Grampians VPO1 & DDO1
- Significant vegetation, protected by Ararat VPO1 & VPO2

Social

- Grampians, one of Australia's most spectacular natural tourist attractions
 - grand & rugged mountain ranges
 - spectacular wildflower displays
 - wide range of outdoor recreational opportunities
 - wealth of Aboriginal rock art sites
 - MacKenzie Falls, flows year-round is one of Victoria's largest & most spectacular waterfalls
 - Mount William, culturally significant to Wurundjeri people, descendants of the people who quarried, traded & made axes from greenstone at the mountain
 - Kalimna & Silverband Falls
- The Gap Winery, part of the Grampians winery region, tourist attraction

LANDSCAPE PROTECTION & MANAGEMENT

Planning Scheme Policies & Controls

This Character Area is subject to the Ararat, Southern Grampians and Northern Grampians Planning Schemes.

Key Clauses

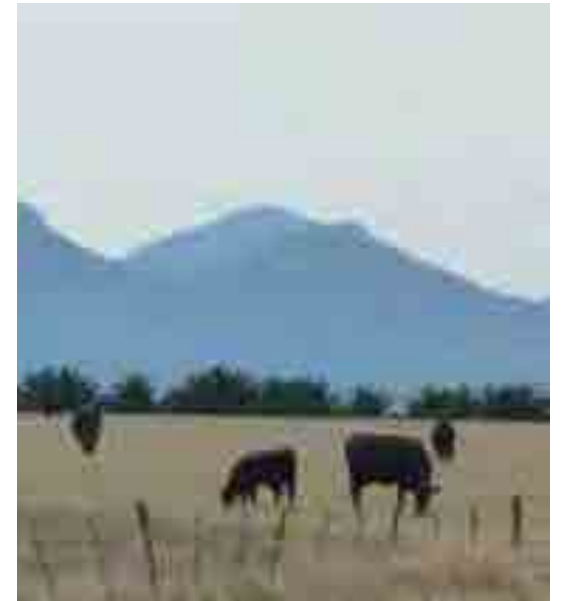
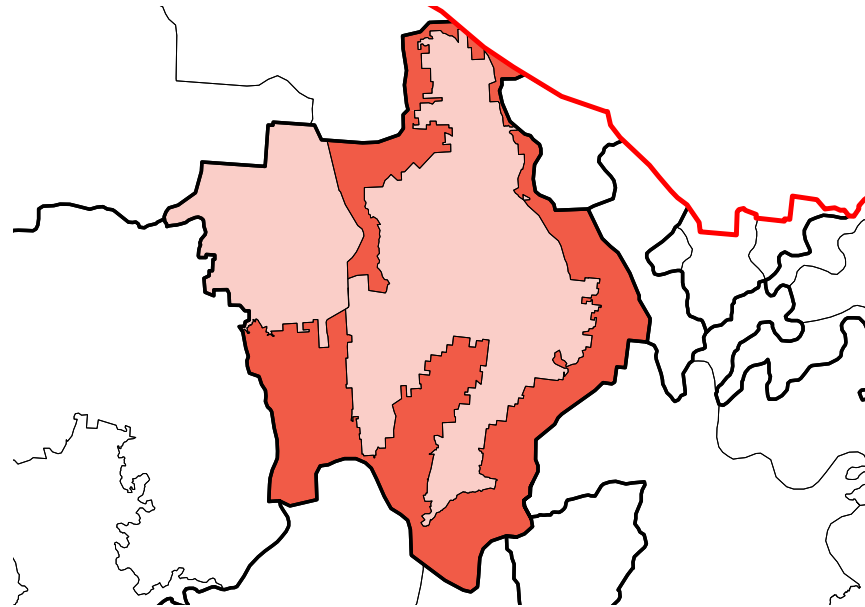
- Ararat Clause 21.04-4: Rural Landscape
- Northern Grampians Clause 22.04: Halls Gap / Lake Bellfield

Key Zones

- FZ
- PCRZ
- RLZ at Bellfield, Halls Gap, Pomonal

Key Overlays

- Ararat SLO1: Grampians Surrounds & Black Range
- Northern Grampians SLO1: Grampians Environs
- Ararat ESO2: Watercourses, Waterbody & Wetland Protection Areas
- Northern Grampians HO25: Zumsteins Recreation Centre
- Northern Grampians HO26: Heatherlie (Mount Difficult) Quarry
- Ararat VPO1: Significant & Remnant Vegetation Areas
- Ararat VPO2: Roadside Vegetation Protection Areas
- Northern Grampians VPO1: Halls Gap / Lake Bellfield Environs
- WMO / BMO
- Northern Grampians DDO1: Halls Gap / Lake Bellfield Environs



Character Area 6.2

Grampians Surrounds

6.2 GRAMPIANS SURROUNDS

The character of the land surrounding the Grampians is driven by the proximity of the mountain range, where the scale of the landform overwhelms surrounding landscape elements and the formation is often so close the texture in the sandstone ridges can easily be seen. The proportion of the ranges is exacerbated by the flat topography and direct view lines allow for their presence to incrementally grow in scale on approach. The density of vegetation within paddocks allows for the national park to blend with the surrounding landscape. This area contains the lower landform of the Black Range State Park which is separated from the main body of the ranges by flat agricultural land.

Key Features

- Proximity of the Grampians Ranges
- Flat to undulating agricultural land
- Significant stands of remnant roadside vegetation
- Large numbers of River Red Gums scattered throughout paddocks
- Black Range State Forest

Settlements

- Dunkeld
- Cavendish
- Mirranatwa
- Pomonal
- Mafeking
- Wartook
- Moyston
- Dadswells Bridge



Textures of the ranges are easily discernible along Moyston-Dunkeld Road



Mount Sturgeon at the southern end of the Serra Range looms over the town of Dunkeld (image courtesy of Film Victoria)



Figure 1 Grampians Surrounds Overview

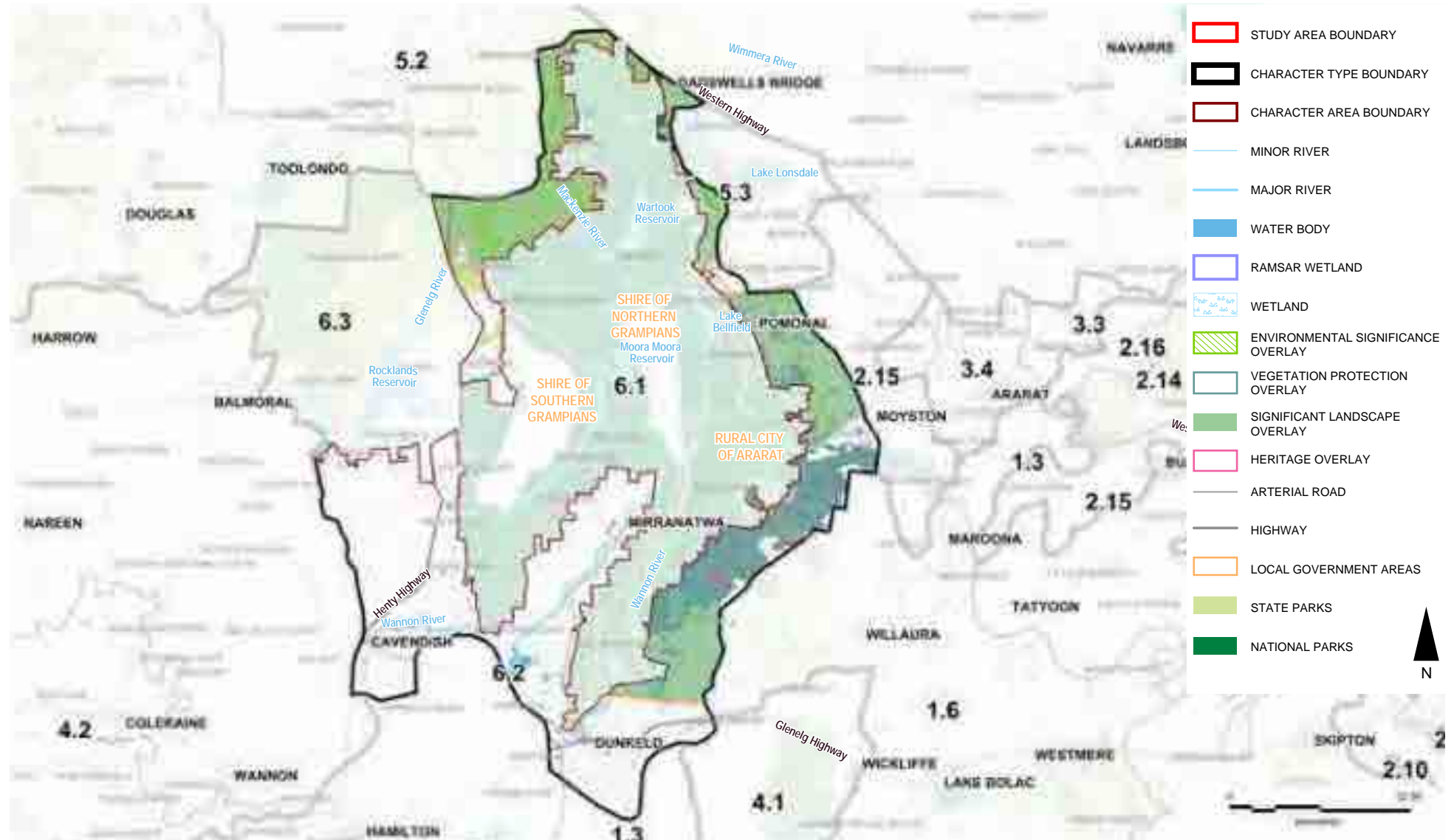


Figure 2 Grampians Surrounds Landform

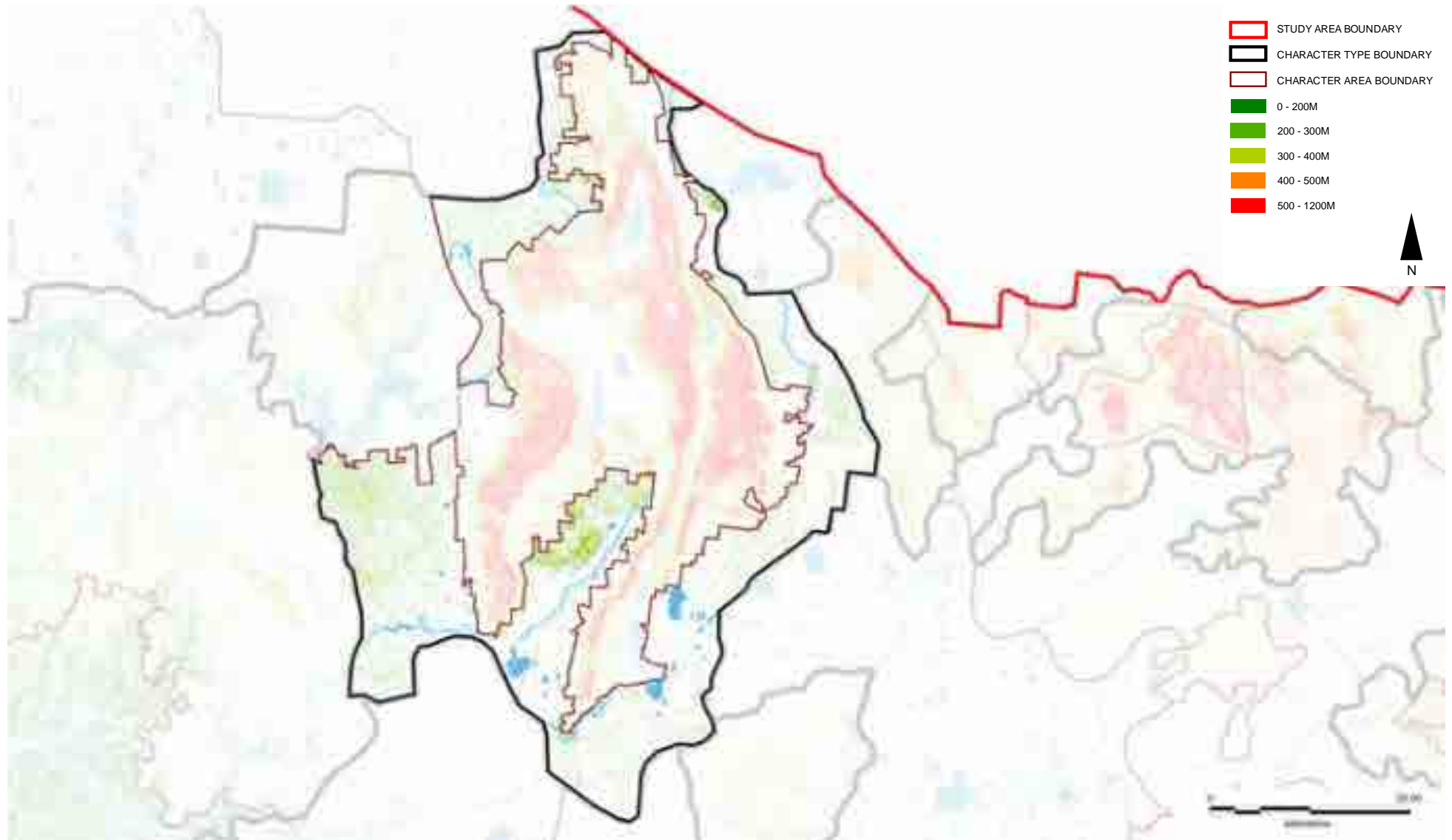
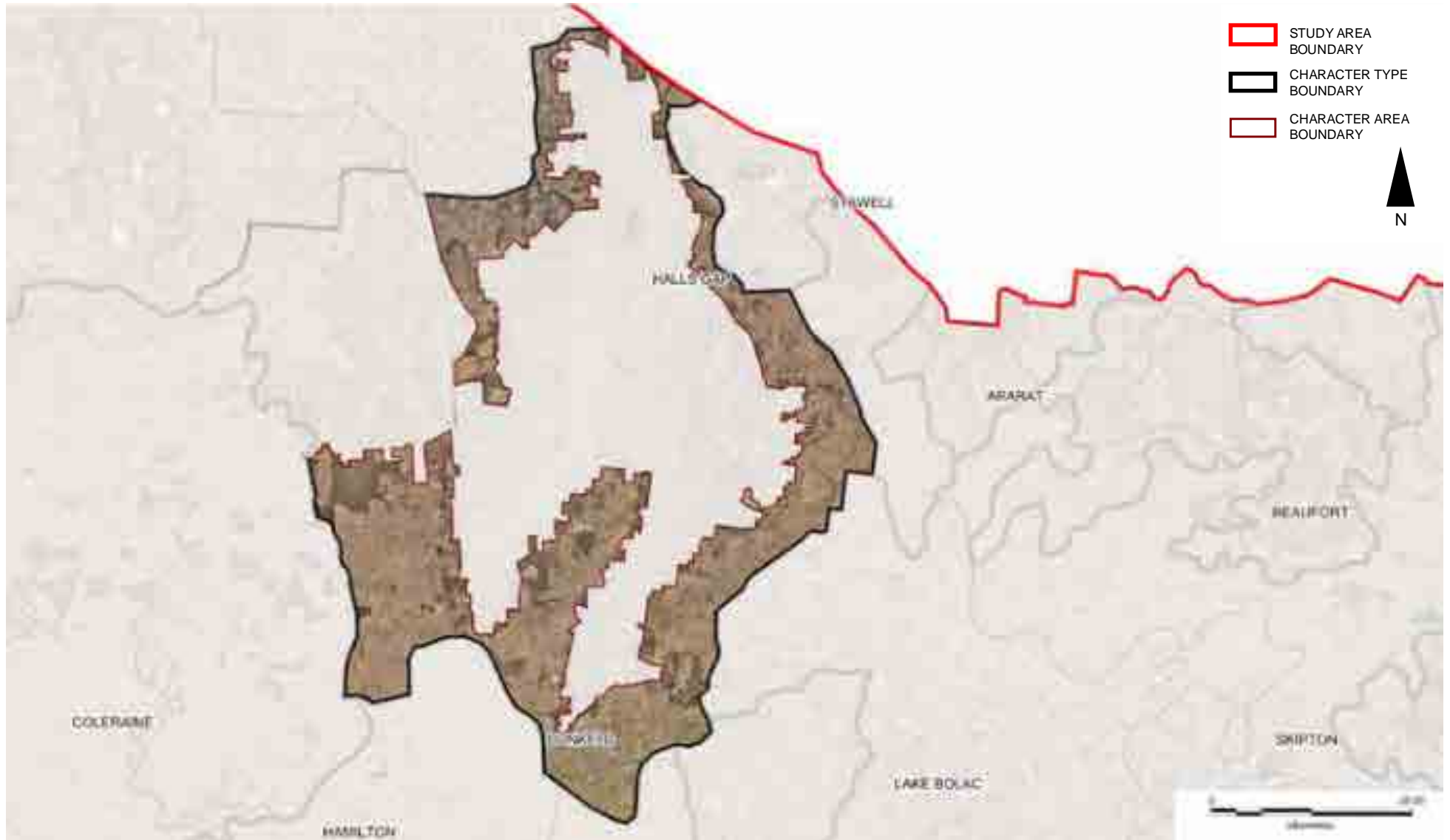


Figure 3 Grampians Surrounds Aerial

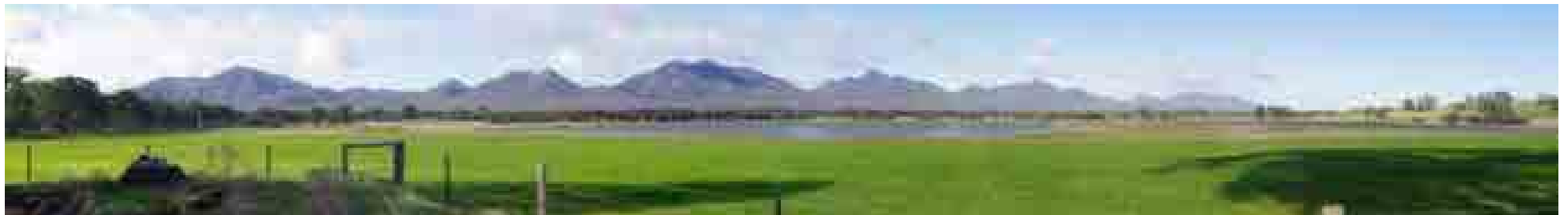


PATTERN OF VIEWING

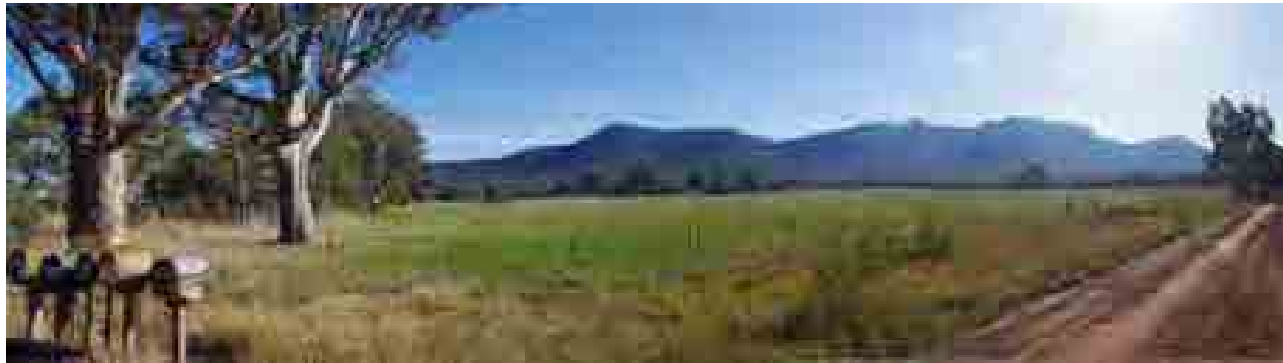
Most of the roads surrounding the Grampians Ranges feature the jagged form of the ridges on the horizon which allow for a spectacular viewing experience from many approaches. These roads vary from highly travelled routes (such as the Melbourne - Adelaide Touring Route) to minor country lanes.

The main viewing corridors for this Character Area are:

- Glenelg Highway between Glenthompson and Hamilton (B160)
- Victoria Valley Road (C217)
- Dunkeld-Cavendish Road (C188)
- Henty Highway north of Cavendish (A200)
- Peshurst-Dunkeld Road (C178)
- Blackwood-Dunkeld Road
- Strathkellar Road
- Northern Grampians Road
- Lake Fyans Road
- Ararat-Pomonal Road
- Moyston-Dunkeld Road
- Other minor roads including East-West Road, Halls Gap-Flat Rock Road, Brimpaen-Laharum Road, Mokanger Road and Victoria Point Road.



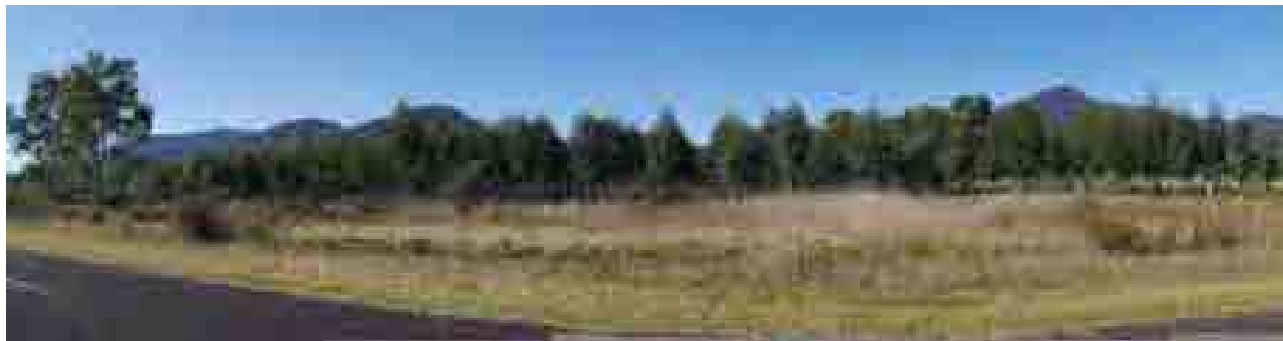
Mirranatwa at the northern end of the Victoria Valley



Victoria Valley Road



Shrouded in cloud near Ledcourt



Blue Gum plantations close to the roadside occasionally block views



Henty Highway

LANDSCAPE VALUES

Historic

- Surrounds the Grampians National Park (Gariwerd)
 - listed on the National Heritage List as a Heritage Landscape which is also environmentally & socially significant
 - listed by the National Trust as a nationally significant landscape
 - protected area on the IUCN list, Category II (National Park)
 - protected by National Parks Act 1975, Schedule 2
 - protected by Ararat SLO1, Horsham SLO1 & SLO3 & Northern Grampians SLO1

Environmental/Scientific

- Wartook Tourist Area, protected by Horsham ESO1
 - adjacent to Grampians National Park
 - has number of tourist services particularly accommodation
 - high environmental values
 - spectacular vistas across the range
- Locally significant vegetation, protected by Ararat VPO1 & VPO2, including scattered red gums and important habitat & links
- Locally significant sites of biodiversity, protected by Ararat ESO3
- Locally significant watercourses, water bodies & wetlands, protected by Ararat ESO2 & Horsham ESO3
- Protected areas on the IUCN list
 - Cavendish Bushland Reserve, Category IV (Habitat/Species Management Area)
 - Bryan Swamp Wildlife Reserve, Category VI (Protected area with sustainable use of natural resources)

Social

- Part of the Grampians winery region, a tourist attraction
- Wimmera Mallee Water channel & reservoirs & Wimmera System Proclaimed Catchment which supply domestic & stock water to the region, protected by Horsham ESO4 & ESO5
- Lake Lonsdale, edge of which is in the Character Area, a major water storage & supply of water to the region, protected by Northern Grampians ESO2
 - major water storage within Wimmera Mallee Water Supply System
 - supply of irrigation & domestic water throughout the Wimmera region

LANDSCAPE PROTECTION & MANAGEMENT

Planning Scheme Policies & Controls

This Character Area is subject to the Ararat, Horsham, Northern Grampians and Southern Grampians Planning Schemes.

Key Clauses

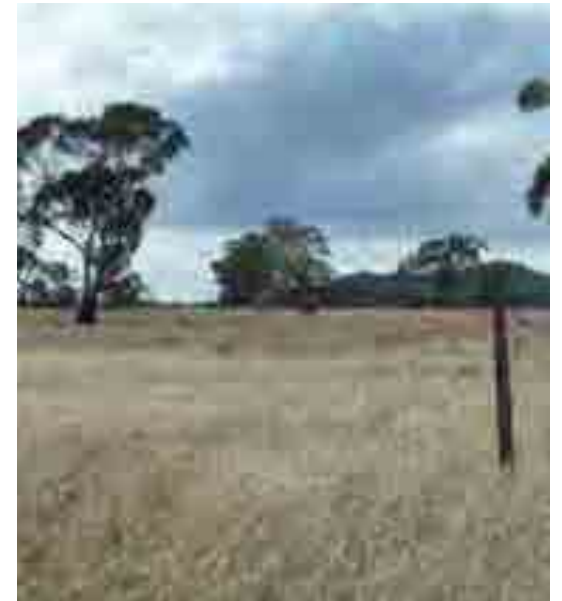
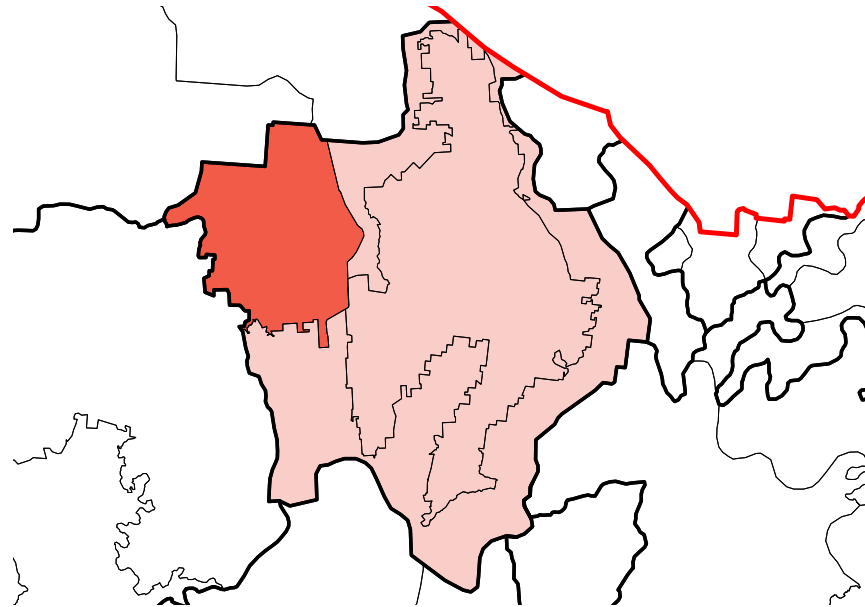
- Ararat Clause 21.04-4: Rural Landscape
- Horsham Clause 22.05: Wartook Tourist Area Policy

Key Zones

- FZ
- PCRZ
- RLZ at Dadswells Bridge, Fyans Creek, Halls Gap, Moyston, Pomonal
- SUZ3 (Ararat only)

Key Overlays

- Ararat SLO1: Grampians Surrounds & Black Range
- Horsham SLO1: Grampians National Park
- Horsham SLO3: Grampians & Black Range Environs
- Northern Grampians SLO1: Grampians Environs
- Ararat ESO2: Watercourses, Waterbody & Wetland Protection Areas
- Ararat ESO3: Habitat Protection Areas
- Horsham ESO1: Wartook Tourist Area
- Horsham ESO3: Watercourse Protection
- Horsham ESO4: Water Catchment Protection
- Horsham ESO5: Channel & Reservoir Protection
- Northern Grampians ESO2: Significant Lake Environs
- Ararat HO132: Cottage, HO133: Woolshed, HO136: Homestead
- Southern Grampians HO including Homesteads, Memorial, Graves & Former Stables, School & Church
- Ararat VPO1: Significant & Remnant Vegetation Areas
- Ararat VPO2: Roadside Vegetation Protection Areas
- WMO / BMO
- Horsham & Southern Grampians LSIO



Character Area 6.3

Black Range (Burrunj) & Surrounds

6.3 BLACK RANGE (BURRUNJ) & SURROUNDS

The Black Range (Burrunj) is a broken ridgeline that sits independently to the west of the northern arm of the Grampians Ranges. The topographical relief is much lower than the Grampians, with Mount Byron rising to over 500 metres, and Mount Talbot to around 300 metres. The southern edge of this Character Area is the large Rocklands Reservoir, which was created through the damming of the Glenelg River.

The Black Range is surrounded by flat pastoral land containing a large number of scattered River Red Gums and dense remnant roadside vegetation, as is characteristic of much of the land surrounding the Grampians Ranges.

Key Features

- Small independent range with low topographical relief
- Contains the Black Range State Park and the Grampians State Forest
- Heavily forested with endemic vegetation

Settlements

There are no major settlements within this Character Area, though it contains a number of rural localities including:

- Rocklands
- Glenisla
- Cherrypool



Flat pastoral land surrounding the Black Ranges



Scrubby vegetation and winding dirt roads in the Black Ranges



The Black Ranges sit low on the horizon and have less of a visual impact than the nearby Grampians

Figure 1 Black Range (Burrunj) & Surrounds Overview

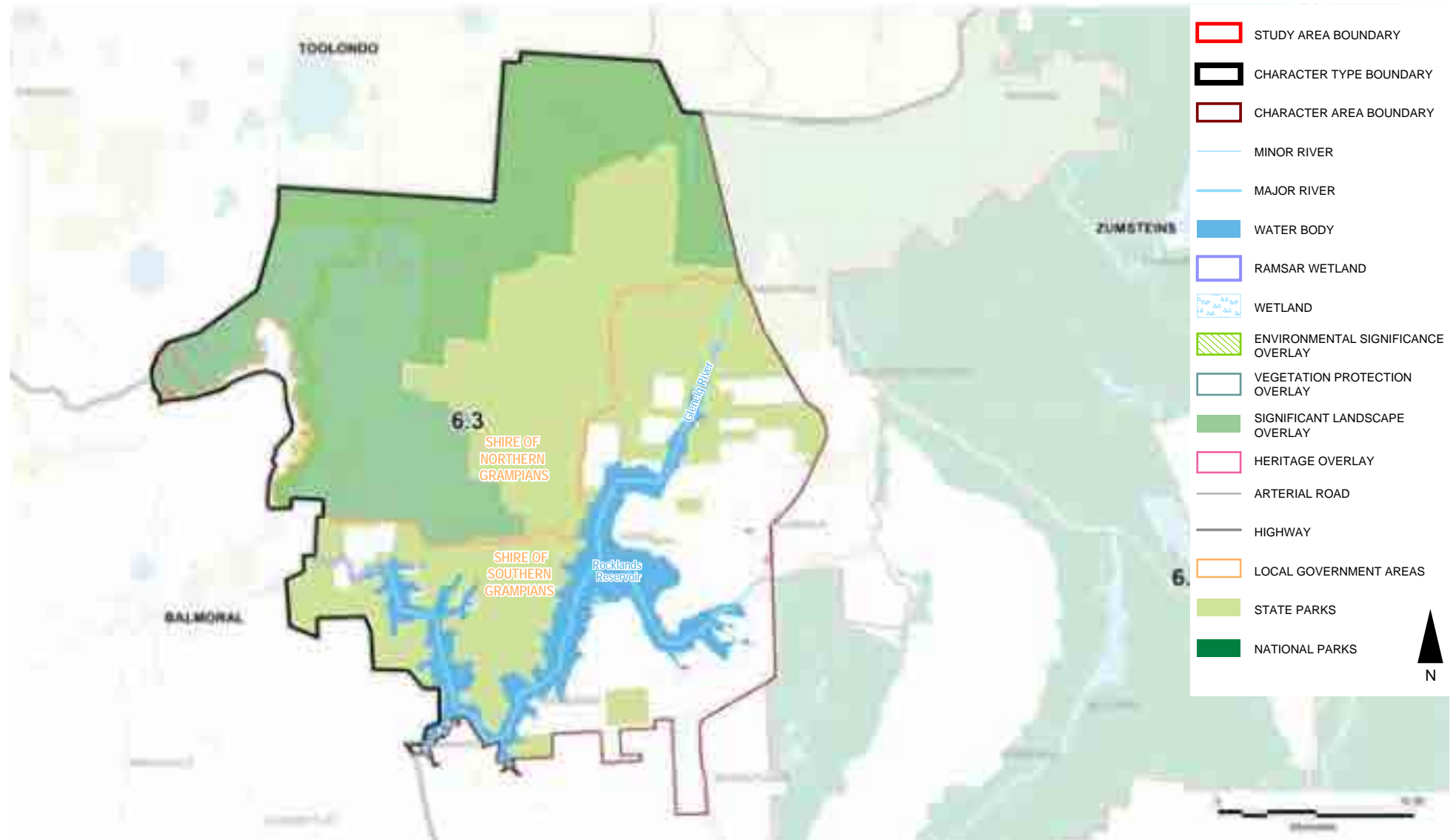


Figure 2 Black Range (Burrunj) & Surrounds Landform

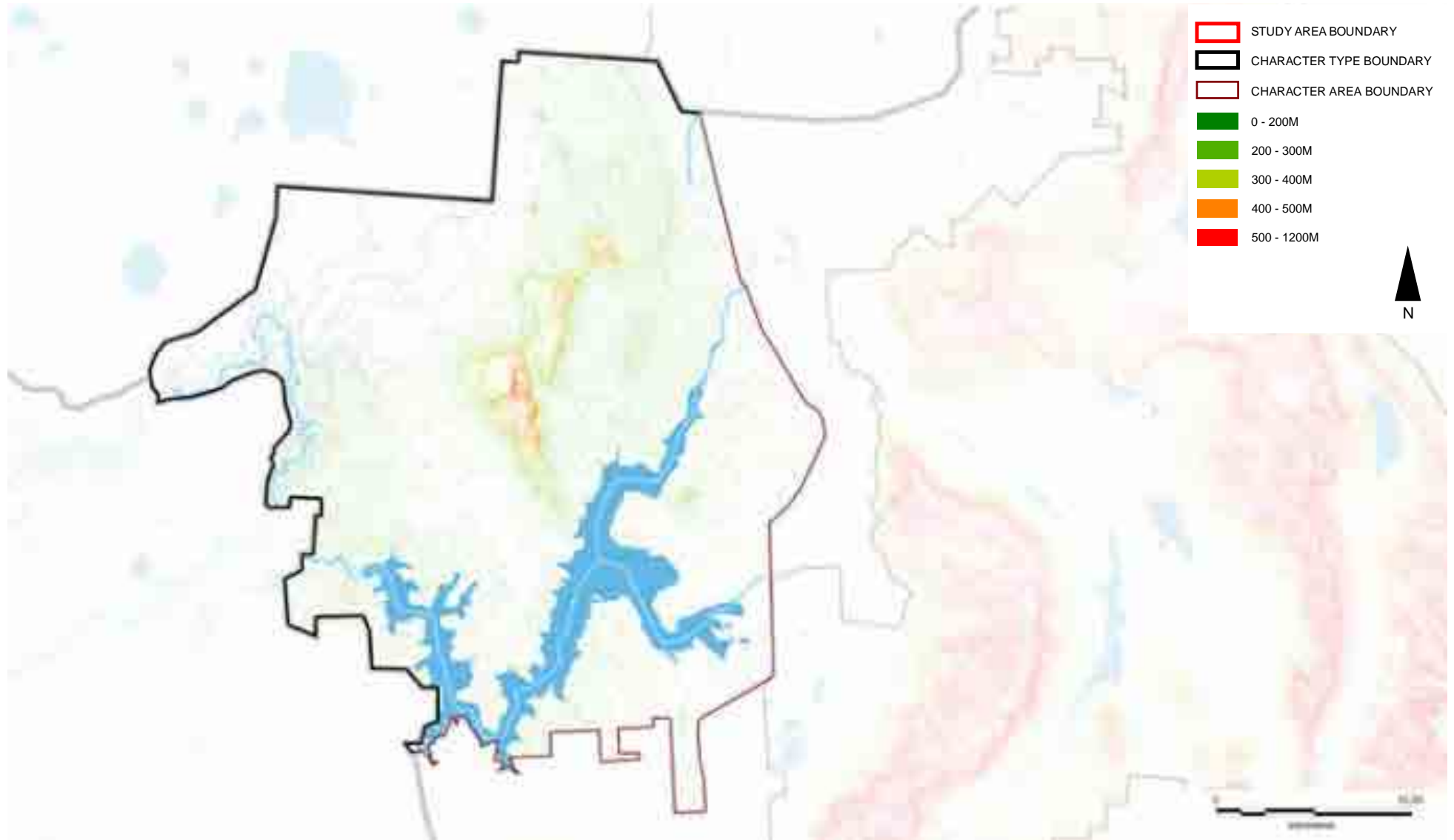


Figure 3 Black Range (Burrunj) & Surrounds Aerial



PATTERN OF VIEWING

The main viewing corridors for this Character Area are:

- Rees Road
- Black Range Road
- The Werribee Vale Road
- Woolpack Road



Black Ranges form a low backdrop to the surrounding pastoral land



Views to the distinctive Grampains outcrops from within the park



Views from within the Black Range extend over the low hills and are punctuated with craggy sandstone outcrops

LANDSCAPE VALUES

Historic

- Rocklands Reservoir, important utility, identified in Southern Grampians Heritage Study Stage 2
- Mugadgadjin & Burrunji rockshelters with aboriginal rock art, Black Range State Park, identified in Gib Wettenhall's *The People of the Gariwerd* (1999)
- Aboriginal rockshelter site dated as being occupied about 5,000 years ago

Environmental/Scientific

- Black Range State Park
 - protected area on the IUCN list, Category II (National Park)
 - protected by National Parks Act 1975, Schedule 2B
- Black Range & surrounds, protected by Horsham SLO3
 - component of Grampians landscape which is a nationally significant landscape
 - has scenic qualities worthy of protection
- Bear Reference Area
 - protected by Reference Areas Act 1978
 - listed in IUCN's List of Protected Areas, Category IA (Strict Nature Reserve)
- Protected areas on the IUCN list
 - Mount Talbot Scenic Reserve, Category III (Natural Monument or Feature)
 - Connangorach I44, Daahl, Red Rock & Telangatuk I42 Bushland Reserves, Category IV (Habitat/Species Management Area)



Rocklands Reservoir was created by damming the Glenelg River as part of the Wimmera Mallee Stock & Domestic Water Supply

Social

- Wimmera Mallee Water channel & reservoirs & Wimmera System Proclaimed Catchment which supply domestic & stock water to the region, protected by Horsham ESO4 & ESO5

LANDSCAPE PROTECTION & MANAGEMENT

Planning Scheme Policies & Controls

This Character Area is subject to the Horsham and Southern Grampians Planning Schemes.

Key Zones

- FZ
- PCRZ

Key Overlays

- Horsham SLO3: Grampians & Black Range Environs
- Horsham ESO4: Water Catchment Protection
- Horsham ESO5: Channel & Reservoir Protection
- Horsham HO22
- Southern Grampians HO25: Rocklands Reservoir, HO209: Homestead, HO210: Woolshed & outbuildings, HO211
- WMO / BMO