

2.11 ENFIELD STATE PARK

Significant Landscape

Character Type 2 The Uplands

Character Areas 2.11 Central Forested Uplands

Enfield State Park lies to the south of Ballarat and was a major source of timber for the region during the gold rush era.

The main viewing corridor through the State Park is the Colac-Ballarat Road, though there are many access tracks through the forest.

Overall Significance Rating: Regional

A detailed significance assessment is provided over the following pages.

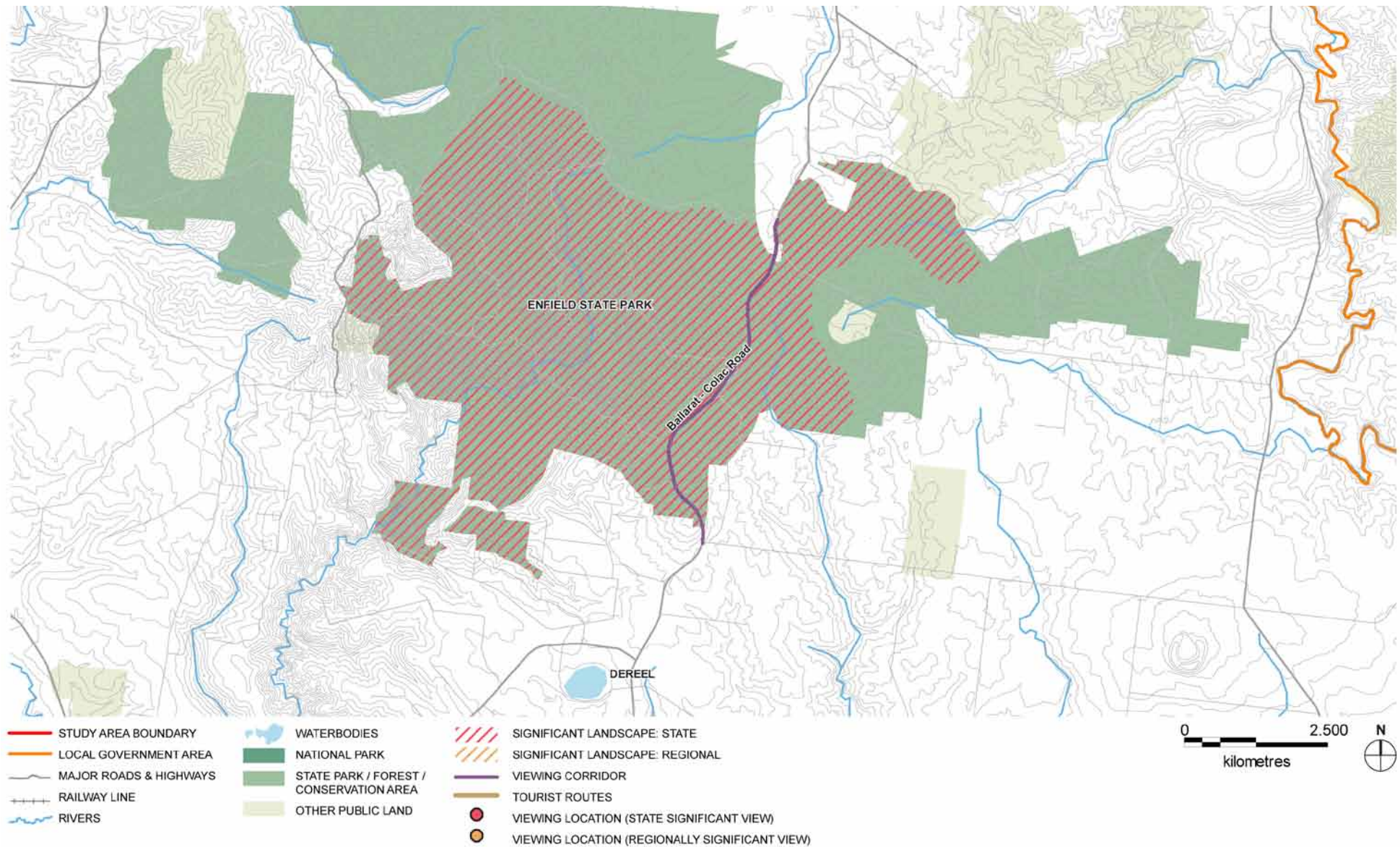


Enfield State Park



Enfield State Park visible on the horizon

Landscape Significance Map



Aesthetic Values

AESTHETIC VALUES				
	Source	Description	Aesthetic Values Rating Considerations (i.e. exemplary, iconic, scarce)	Level of Significance
LANDSCAPE FEATURES	Survey	The Enfield State Park is a thickly vegetated area with visible signs of a history of gold mining and forestry. Nearly half of the park is available for fossicking or panning for gold along Misery Creek.	The thick vegetation cover is scarce in the surrounding context.	High (Regional)
EDGES OR CONTRASTS	Survey	The thick vegetated cover of the Park contrasts with the cleared surrounding paddocks, however, the edges of the park are undefined as it merges into the surrounding State Forest. Rural residential development and small hobby farms on the periphery of the park are often set back into the bush which assists with blending development into the landscape.	The edges of the Enfield State Park create a textural contrast against the surrounding cleared paddocks.	Moderate (Local)
COMPOSITION	Survey	The Enfield State Park sits low on the horizon forming a dark green background to views, with the foreground composed of undulating cleared paddocks.	The heavily vegetated park creates visual interest on the horizon.	Moderate (Local)
OVERALL AESTHETIC SIGNIFICANCE RATING				Regional

Other Cultural Landscape Values

HISTORIC SIGNIFICANCE	
Source	Description
Desktop Research	Aboriginal artefact scatters, earth mounds and scarred trees occur throughout the area.
Parks Victoria	The Enfield State Park was the scene of intense gold mining activity during the 1850s and 60s, and the life and fate of the miners is reflected in the place names of Misery Creek and Surface Point. The latter was a Chinese settlement established in the 1860s and evidence of this include round mining shafts and a memorial.
HISTORIC / CULTURAL SIGNIFICANCE RATING	Regional

ENVIRONMENTAL / SCIENTIFIC SIGNIFICANCE	
Source	Description
IUCN Parks Victoria	The Park is assigned the IUCN Category II (National Parks) of the United Nations' List of National Parks and Protected Areas, for ecosystem conservation and appropriate recreation. It is also protected under the National Parks Act 1975.
Golden Plains Planning Scheme	The area of native forest protected within the Enfield State Park is one of the few remaining within the Shire.
ENVIRONMENTAL / SCIENTIFIC SIGNIFICANCE RATING	State

SOCIAL SIGNIFICANCE	
Source	Description
Aboriginal Affairs Victoria	Enfield State Park is the traditional country of the Wathaurung people to whom it holds social, cultural and spiritual significance. The waterbodies, distinctive natural features and places of ecological value within this area are likely to have high Aboriginal cultural heritage sensitivity.
Desktop Research	The Park is popular for a host of outdoor pursuits, including bushwalking, picnicking, horse riding, bike riding, fossicking, camping and nature study. There are also spectacular seasonal wildflower displays.
SOCIAL SIGNIFICANCE RATING	Regional

2.12 DEVILS KITCHEN

Significant Landscape

Character Type	2	The Uplands
Character Areas	2.10	Central Forested Uplands

Devils Kitchen is a deeply incised gorge of the Woody Yallock River to the west of Ballarat with exposed, steep sided basalt cliffs. It is included within a Geological Reserve managed by Parks Victoria.

Major viewing corridors:

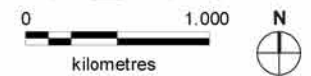
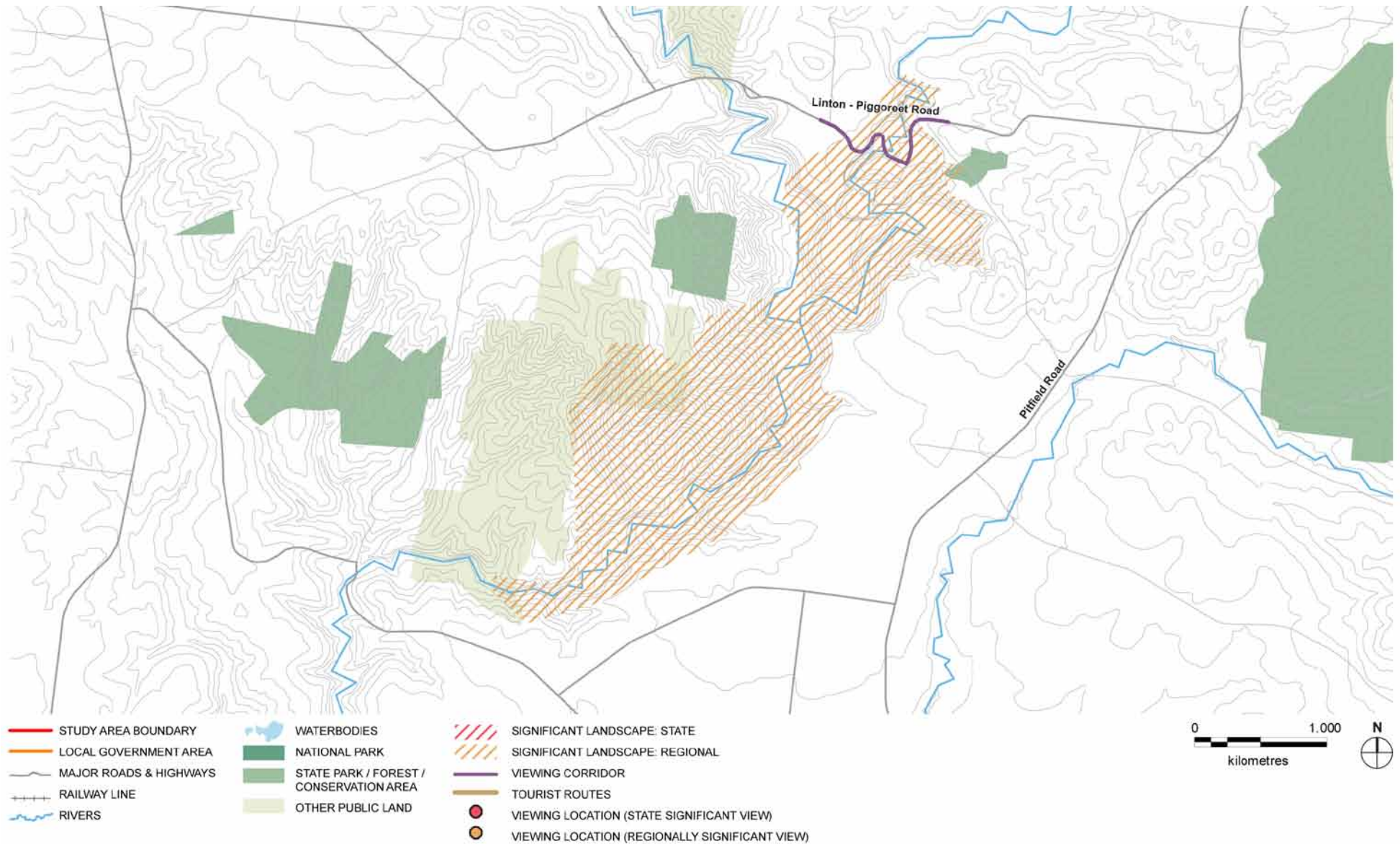
- Piggoreet Rd

Overall Significance Rating: Regional

A detailed significance assessment is provided over the following pages.



Landscape Significance Map



Aesthetic Values

AESTHETIC VALUES				
	Source	Description	Aesthetic Values Rating Considerations (i.e. exemplary, iconic, scarce)	Level of Significance
LANDSCAPE FEATURES	Survey	<p>Open, rolling pastures are deeply incised by the steep-sided basalt gorge of the Woody Yallock River, forming the Devils Kitchen.</p> <p>The steep basaltic cliffs of the Devils Kitchen comprise highly distinctive formations of columnar ridges and stacked, box-like sculptural rocks. Scrubby vegetation clings to the edges of these cliffs, blending the exposed rocky faces into the cleared, grassy plains above.</p> <p>Amongst the surrounding rolling hills of the Central Forested Uplands Area, the Devils Kitchen is a unique and distinctive feature.</p>	The highly distinctive formation of the basalt cliffs make the Devils Kitchen a scarce and iconic landscape within the broader regional area.	High (Regional)
EDGES OR CONTRASTS	Survey	<p>The rolling plateau is dissected by the deep valley of the Woody Yallock River to reveal the exposed, fractured basalt rock. The rock formations create strong edges and a distinctive textural contrast where rock and paddock meet.</p> <p>The red-tinged rock casts dark shadows from its extruded faces. The rock is set against the open, grassy plains from which it descends.</p> <p>Dark green, wiry shrubs punctuate the landscape and the edge of the valley walls, creating a visual link between grassy plain and gorge.</p>	The contrast between the basalt gorge and the surrounding rolling grassland is a scarce and iconic landscape feature within the broader regional area.	High (Regional)
COMPOSITION	Survey	<p>Views open suddenly as the gorge is descended. The viewing corridor of Linton-Piggoreet Road winds through the gorge and is framed by the steep exposed basal walls.</p> <p>At the base of the gorge, views are contained within the walls of the valley. As the gorge is ascended a foreground of rolling and partially vegetated grassland terminates at low rolling hills in the distance.</p> <p>The contrast of the open, rolling grasslands with the striking basalt gorge creates a dynamic and unique landscape composition.</p>	The composition of the landscape features of the open, rolling grasslands and the striking basalt gorge is an iconic landscape within the local area.	Moderate (Local)
OVERALL AESTHETIC SIGNIFICANCE RATING				Regional

Other Cultural Landscape Values

HISTORIC SIGNIFICANCE	
Source	Description
Desktop Research	Aboriginal artefact scatters, earth mounds and scarred trees occur throughout the area.
DPCD Research	The Woody Yallock-Smythesdale Goldfield was in operation from the 1850s. Deep lead mining occurred in and around Piggoreet and the Devils Kitchen.
SIGNIFICANCE RATING	Regional

ENVIRONMENTAL / SCIENTIFIC SIGNIFICANCE	
Source	Description
Golden Plains Planning Scheme	The Devils Kitchen is included in the Significant Landscape Overlay (SLO1) as a significant geological formation within the Western Plains.
Parks Victoria	The Devils Kitchen is a designated Geological Reserve.
IUCN	The Devils Kitchen Geological Reserve is a protected area on the IUCN List, Category III (Natural Monument or Feature).
SIGNIFICANCE RATING	State

SOCIAL SIGNIFICANCE	
Source	
Aboriginal Affairs Victoria	The Devils Kitchen and Woody Yallock River are the traditional country of the Wathaurung people to whom it holds social, cultural and spiritual significance. The waterbodies, distinctive natural features and places of ecological value within this area are likely to have high Aboriginal cultural heritage sensitivity.
Park Web, rock climbing websites	The Devils Kitchen is a popular destination for bushwalking, rock climbing and abseiling for people from the local area and day trippers from further afield.
SIGNIFICANCE RATING	Regional

2.13 ISLAND UPLANDS

Significant Landscape

Character Type	2	Uplands
Character Area	2.12	Island Uplands

The Island Uplands include Mount Beckworth, Mount Bolton and Mount Ercildoune/Mount Misery which are located to the west of Clunes.

Major viewing corridors:

- Fentons Road
- Coghills Creek Road
- Sunraysia Highway
- Langhi Kal Kal Road
- Mount Beckworth Road
- Sunraysia Highway
- Beaufort- Waubra Road

Overall Significance Rating: Regional

A detailed significance assessment is provided over the following pages.



Exposed granite outcrops



The adjacent smooth sided volcanic rises contrast in texture and scale

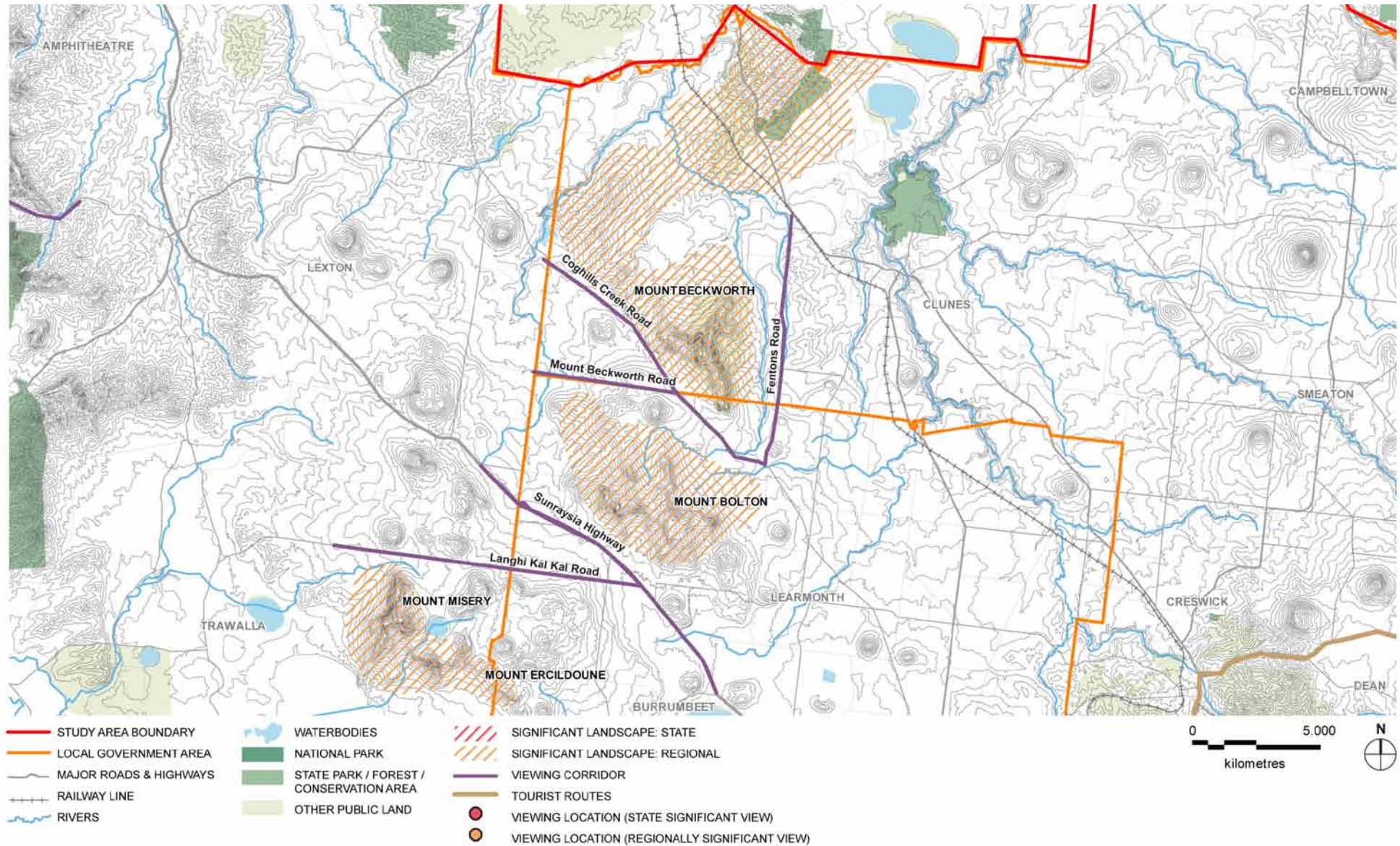


Mount Ercildoune



The forested silhouette of Ercildoune

Landscape Significance Map



Aesthetic Values

AESTHETIC VALUES				
	Source	Description	Aesthetic Values Rating Considerations (i.e. exemplary, iconic, scarce)	Level of Significance
LANDSCAPE FEATURES	Survey	The Island Uplands rise as three individual landforms (Mount Beckworth, Mount Bolton and Mount Ercildoune) from the northern edges of the Western Volcanic Plain. Their prominence is visible from long distances away. The Waubra wind farm is sited to the east of the rises, and the tops of turbines are a visible feature in many parts of this landscape.	The Island Uplands are an iconic feature of the region and are easily identifiable within the broader landscape. The three formations are exemplary volcanic landscape features in this area.	High (Regional)
EDGES OR CONTRASTS	Survey	The Island Uplands create easily distinguishable landforms that rise from the surrounding undulating agricultural land. The granitic outcrops and tors are an outstanding feature that provides additional visual interest. Edges of pine plantation also provide a contrast, though this has resulted in ugly scarring on the landscape where they have been felled in a number of places.	Granite outcrops and defined topography make this landscape an iconic feature of the area.	High (Regional)
COMPOSITION	Survey	The steep slopes are partially vegetated which has left the rock-strewn faces and bulging granitic outcrops exposed. These rugged features differentiate the Island Uplands from the smooth, rounded volcanic rises found in the adjacent area east of Clunes.	The highly distinctive landscape features of the Island Uplands provide an interesting visual composition within the area.	Moderate (Local)
OVERALL AESTHETIC SIGNIFICANCE RATING				Regional

Other Cultural Landscape Values

HISTORIC SIGNIFICANCE	
Source	Description
Desktop Research	Aboriginal artefact scatters, earth mounds and scarred trees occur throughout the area.
Parks Victoria	Major Mitchell passed through this area as a part of his Australia Felix expedition in 1836.
Register of the National Estate, Victorian Heritage Register	Jubilee Company Quartz Gold Mine, Jubilee Road, Scarsdale is listed on both registers as a characteristic example of an important form of gold mining.
Victorian Heritage Register	Ercildoune Homestead is protected under the Heritage Overlay of the Prynees Planning Scheme and included on the Victorian Heritage Register (HO23).
SIGNIFICANCE RATING	Regional

ENVIRONMENTAL / SCIENTIFIC SIGNIFICANCE	
Source	Description
Ballarat Planning Scheme	Mount Bolton is included within the Significant Landscape Overlay (SLO2) as a unique landscape characterised by granite outcrops with remnant mature forest supporting a range of habitats.
Parks Victoria Hepburn Planning Scheme	Mount Beckworth Scenic Reserve, (Formerly Mount Beckworth State Forest), is protected under the Heritage Overlay (HO895) and the Environmental Significance Overlay (ESO1). The Reserve is a significant flora and fauna habitat.
IUCN	Protected areas on the IUCN list include the Dunach Nature Conservation Reserve, Category IA (Strict Nature Reserve) and Mount Beckworth Scenic Reserve, Category III (Natural Monument or Feature).
SIGNIFICANCE RATING	Regional

SOCIAL SIGNIFICANCE	
Source	Description
Aboriginal Affairs Victoria	The Island Uplands are the traditional country of the Dja Dja Warrung people to whom it holds social, cultural and spiritual significance. The waterbodies, distinctive natural features and places of ecological value within this area are likely to have high Aboriginal cultural heritage sensitivity.
Desktop Research	Mount Beckworth Scenic Reserve attracts visitors for bushwalking and picnicking. The grounds of Ercildoune Homestead are open to visitors.
SIGNIFICANCE RATING	Regional

2.14 THE LOWER PYRENEES REGION

Significant Landscape

Character Type	2	Uplands
	3	Goldfields
Character Area	2.13	Eastern Pyrenees
	2.14	Southern Pyrenees Rises
	2.15	Upland Interface
	2.16	Mount Cole Creek
	3.3	Central Goldfields

The Lower Pyrenees Region lies to the east of Ararat and encompasses rugged hills and valleys. This area includes Langi Ghiran State Park and Mount Buangor State Park.

Viewing locations within this landscape include:

- The summit of Langi Ghiran
- The summit of Mount Buangor

Major viewing corridors:

- Western Highway
- Raglan - Elmhurst Road
- Buangor - Ben Nevis Road
- Vine Road North
- Amphitheatre Road
- Lexton - Ararat Road
- Warrack Road

Overall Significance Rating: Regional

A detailed significance assessment is provided over the following pages.



View towards Mount Lonarch



Mount Buangor



View towards Langi Ghiran to the right of the image with the Challicum hills to the left

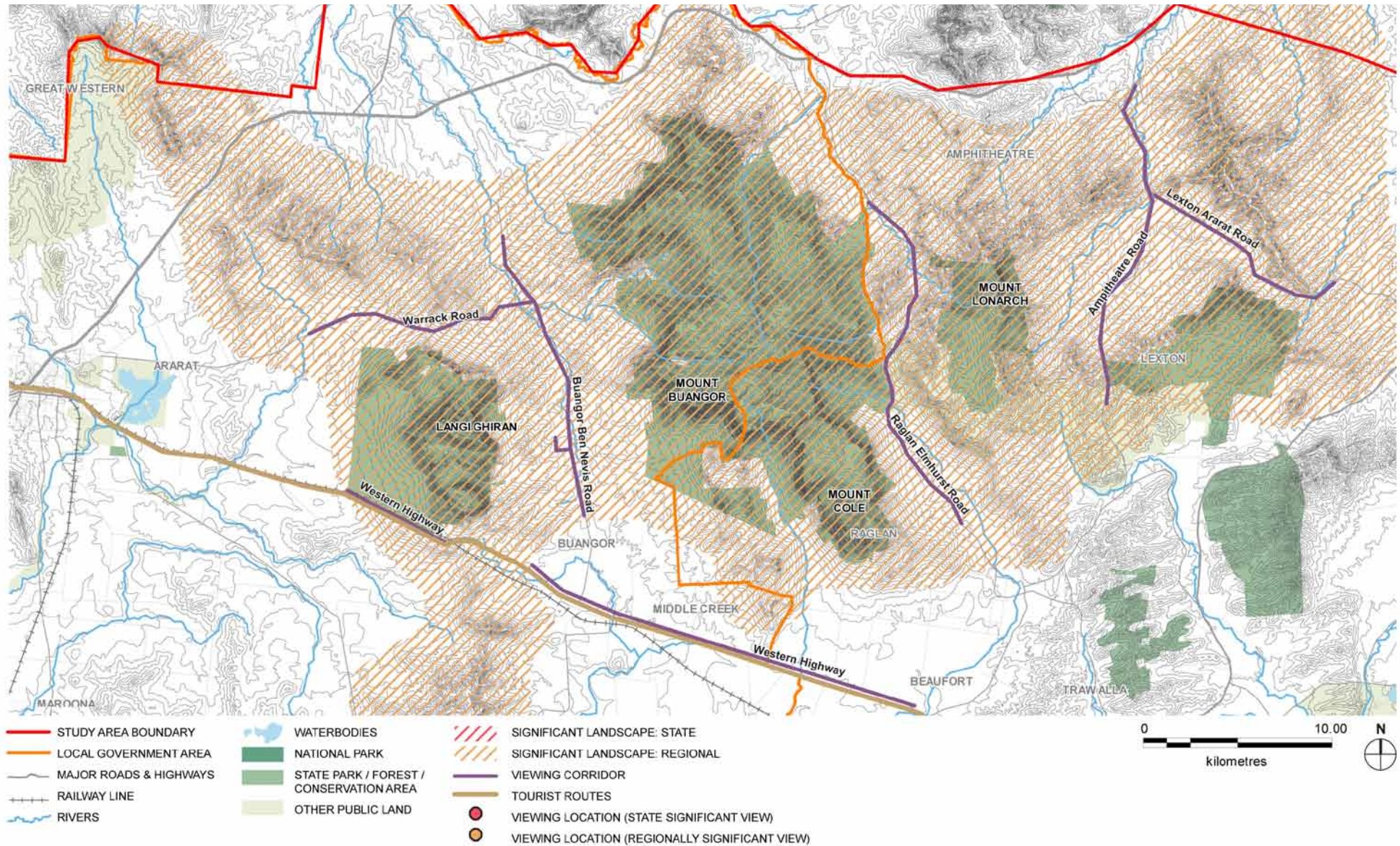


View towards cleared hills on the Lexton to Ararat Road



Ridge rises near Ampitheatre

Landscape Significance Map



Aesthetic Values

AESTHETIC FEATURES				
	Source	Description	Aesthetic Values Rating Considerations (i.e. exemplary, iconic, scarce)	Level of Significance
LANDSCAPE FEATURES	Survey	<p>This landscape includes the forested areas and steep escarpments of Mount Buangor, Mount Cole, Mount Lonarch and Mount Langhi Ghiran and the cleared undulating valleys in between. Rugged granite peaks and gentle sloping woodlands rise from the surrounding plains which are peppered with ancient Red Gums. To the east towards Amphitheatre, ridge landforms are visible, some of which are cleared allowing open views of the topography.</p> <p>The striking silhouettes are, in places, surrounded by the regular pattern of a productive landscape as vines and orchards follow the contours of the land.</p>	Multiple features create an exemplary viewing experience within the Victorian context.	High (Regional)
EDGES OR CONTRASTS	Survey	<p>The dark green forested rises contrast in colour and texture with the cleared yellowish pastoral plains from which they rise. Native vegetation occasionally gives way to the regular texture and colour of pine plantations. In some places, plantations create geometrical scars across the steep sided rises as they have been partially cleared.</p> <p>There is a strong contrast between the cleared valleys and vegetated rises which form the backdrop to views along viewing corridors.</p>	Edges and contrasts within this landscape are clearly defined in some locations providing interest within the landscape	Moderate (Local)
COMPOSITION	Survey	<p>The foreground is composed of cleared pastoral land which is peppered with Red Gums in some locations. In the mid ground, the dark green hillslopes of the lower Pyrenees rise terminating views. Views often contain elements of productivity in the landscape adding visual interest.</p> <p>Views are often glimpsed through breaks in roadside vegetation.</p>	The topographical rises of the Pyrenees which are blanketed in thick vegetation create an iconic viewing experience.	High (Regional)
OVERALL AESTHETIC SIGNIFICANCE RATING				Regional

Other Cultural Landscape Values

HISTORIC SIGNIFICANCE	
Source	Description
Desktop Research	Aboriginal artefact scatters, earth mounds and scarred trees occur throughout the area.
Desktop Research	Langi Ghiran was visited by Major Thomas Mitchell on his 1836 'Australia Felix' expedition, who named it 'Mount Mistake'. The two reservoirs in the Langi Ghiran National Park were constructed in 1880, and an engineering achievement of their time. From the time of European settlement, the area was a significant timber harvesting and farming area.
SIGNIFICANCE RATING	Regional

ENVIRONMENTAL / SCIENTIFIC SIGNIFICANCE	
Source	Description
IUCN Parks Victoria DSE	Langi Ghiran and Mount Buangor State Parks are protected area on the IUCN list, Category II and by the National Parks Act 1975, Schedule 2B. Langi Ghiran State Park is particularly significant for its granite outcrops and eucalypt woodlands and Mt Buangor for its forests, waterfalls and wildflowers. Mount Cole also provide a significant flora and fauna habitat for the area.
Ararat Planning Scheme	Significant vegetation within the area is protected by the Vegetation Protection Overlay, including stands of roadside vegetation and scattered Red Gums which are important for wildlife habitat and links (VPO 1&2). The Environmental Significance Overlay is applied to land around creeks (ESO2).
Pyrenees Planning Scheme	Significant roadside vegetation is protected by the Vegetation Protection Overlay (VPO1). The Environmental Significance Overlay is applied to land around creeks (ESO2).
SIGNIFICANCE RATING	State, or higher

SOCIAL SIGNIFICANCE	
Source	Description
Aboriginal Affairs Victoria	The Lower Pyrenees Region is the traditional country of the Djab warrung and Wathaurung people to whom it holds social, cultural and spiritual significance. The waterbodies, distinctive natural features and places of ecological value within this area are likely to have high Aboriginal cultural heritage sensitivity.
Parks Victoria	Lar-ne-jeering (Langi Ghiran) is Djab warrung language for 'home of the black cockatoo'. The Langi Ghiran State Park includes a significant Aboriginal rock art site. Mount Buangor and Mount Cole are both known as 'Beereep-Beereep' meaning 'wild mount'.
Parks Victoria Tourist Information	The State Parks and reserves of the area offer significant opportunities for bushwalking, camping and nature study .
SIGNIFICANCE RATING	Regional

OTHER	
Source	Description
Tourist Information	The tourist visitation drawn by the natural features of the area contribute to the local and regional economy.
SIGNIFICANCE RATING	Regional